

PIF4 Rabbit pAb

Catalog No.: A20725 **4 Publications**

Basic Information

Observed MW

55kDa

Calculated MW

48kDa

Category

Primary antibody

Applications

WB, ELISA

Cross-Reactivity

Arabidopsis thaliana

Background

Isolated as a semidominant mutation defective in red -light responses. Encodes a nuclear localized bHLH protein that interacts with active PhyB protein. Negatively regulates phyB mediated red light responses. Involved in shade avoidance response. Protein abundance is negatively regulated by PhyB.

Recommended Dilutions

WB 1:500 - 1:1000

ELISA Recommended starting concentration is 1 µg/mL. Please optimize the concentration based on your specific assay requirements.

Immunogen Information

Gene ID

818903

Swiss Prot

Q8W2F3

Immunogen

Synthetic peptide. This information is considered to be commercially sensitive.

Synonyms

AtPIF4; MFL8.13; MFL8_13; phytochrome interacting factor 4; SRL2; PIF4

Contact

☎ | 400-999-6126

✉ | cn.market@abclonal.com.cn

🌐 | www.abclonal.com.cn

Product Information

Source

Rabbit

Isotype

IgG

Purification

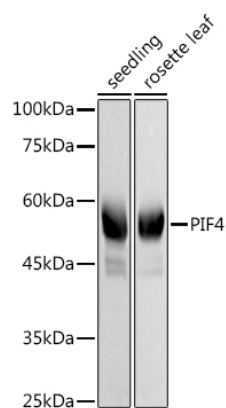
Affinity purification

Storage

Store at -20°C. Avoid freeze / thaw cycles.

Buffer: PBS with 0.09% Sodium azide, 50% glycerol, pH7.3.

Validation Data



Western blot analysis of extracts of various tissues from *Arabidopsis thaliana*, using PIF4 Rabbit pAb (A20725) at 1:1000 dilution.

Secondary antibody: HRP-conjugated Goat anti-Rabbit IgG (H+L) (AS014) at 1:10000 dilution.

Lysates/proteins: 25µg per lane.

Blocking buffer: 3% nonfat dry milk in TBST.

Detection: ECL Basic Kit (RM00020).

Exposure time: 10s.