

# UGT2B17 Rabbit pAb

Catalog No.: A20683

## Basic Information

### Observed MW

Refer to figures

### Calculated MW

61kDa

### Category

Primary antibody

### Applications

IF/ICC,ELISA

### Cross-Reactivity

Human

## Background

This gene encodes a member of the uridine diphosphoglucuronosyltransferase protein family. The encoded enzyme catalyzes the transfer of glucuronic acid from uridine diphosphoglucuronic acid to a diverse array of substrates including steroid hormones and lipid-soluble drugs. This process, known as glucuronidation, is an intermediate step in the metabolism of steroids. Copy number variation in this gene is associated with susceptibility to osteoporosis.

## Recommended Dilutions

**IF/ICC** 1:50 - 1:200

**ELISA** Recommended starting concentration is 1 µg/mL. Please optimize the concentration based on your specific assay requirements.

## Immunogen Information

### Gene ID

7367

### Swiss Prot

O75795

### Immunogen

Recombinant protein (or fragment). This information is considered to be commercially sensitive.

### Synonyms

BMND12; UDPGT2B17; UGT2B17

## Contact

☎ | 400-999-6126

✉ | [cn.market@abclonal.com.cn](mailto:cn.market@abclonal.com.cn)

🌐 | [www.abclonal.com.cn](http://www.abclonal.com.cn)

## Product Information

### Source

Rabbit

### Isotype

IgG

### Purification

Affinity purification

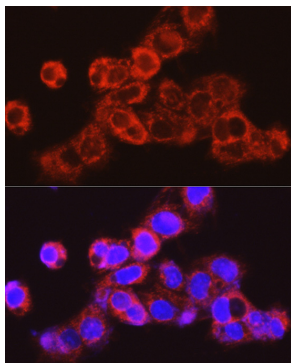
### Storage

Store at -20°C. Avoid freeze / thaw cycles.

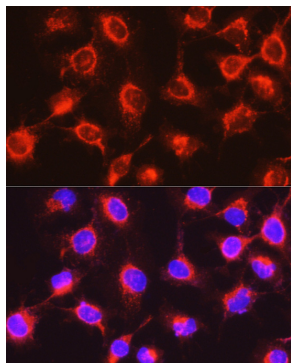
Buffer: Buffer: PBS containing 50% glycerol, preserved with proclin300 or sodium azide (as specified on the Certificate of Analysis), pH 7.3.

## Validation Data

---



Immunofluorescence analysis of HepG2 cells using UGT2B17 Rabbit pAb (A20683) at dilution of 1:200 (40x lens). Secondary antibody: Cy3-conjugated Goat anti-Rabbit IgG (H+L) (AS007) at 1:500 dilution. Blue: DAPI for nuclear staining.



Immunofluorescence analysis of PC-3 cells using UGT2B17 Rabbit pAb (A20683) at dilution of 1:200 (40x lens). Secondary antibody: Cy3-conjugated Goat anti-Rabbit IgG (H+L) (AS007) at 1:500 dilution. Blue: DAPI for nuclear staining.