

MonoMethyl-Histone H3-K18 Rabbit mAb

Catalog No.: A20680 **Recombinant**

Basic Information

Observed MW

17kDa

Calculated MW

16kDa

Category

Primary antibody

Applications

WB,DB,IHC-
P,IF/ICC,IP,ELISA,ChIP,CUT&Tag

Cross-Reactivity

Human, Mouse, Rat, Other (Wide Range
Predicted)

CloneNo number

ARC2621

Background

Histones are basic nuclear proteins that are responsible for the nucleosome structure of the chromosomal fiber in eukaryotes. Nucleosomes consist of approximately 146 bp of DNA wrapped around a histone octamer composed of pairs of each of the four core histones (H2A, H2B, H3, and H4). The chromatin fiber is further compacted through the interaction of a linker histone, H1, with the DNA between the nucleosomes to form higher order chromatin structures. This gene is intronless and encodes a replication-dependent histone that is a member of the histone H3 family. Transcripts from this gene lack polyA tails; instead, they contain a palindromic termination element. This gene is located separately from the other H3 genes that are in the histone gene cluster on chromosome 6p22-p21.3.

Recommended Dilutions

WB 1:500 - 1:1000**DB** 1:500 - 1:1000**IHC-P** 1:50 - 1:200**IF/ICC** 1:50 - 1:200**IP** 0.5µg-4µg antibody for
200µg-400µg extracts of
whole cells**ELISA** Recommended starting
concentration is 1 µg/mL.
Please optimize the
concentration based on
your specific assay
requirements.**ChIP** 5µg antibody for
5µg-10µg of Chromatin**CUT&Tag** 10⁵ cells /1 µg

Immunogen Information

Gene ID

8290/8350

Swiss Prot

Q16695/P68431

Immunogen

Synthetic peptide. This information is considered to be commercially sensitive.

Synonyms

H3t; H3.4; H3/g; H3FT; H3C16; HIST3H3; MonoMethyl-Histone H3-K18

Product Information

Source

Rabbit

Isotype

IgG

Purification

Affinity purification

Storage

Store at -20°C. Avoid freeze / thaw cycles.

Buffer: PBS with 0.02% sodium azide,0.05% BSA,50% glycerol,pH7.3.

Contact

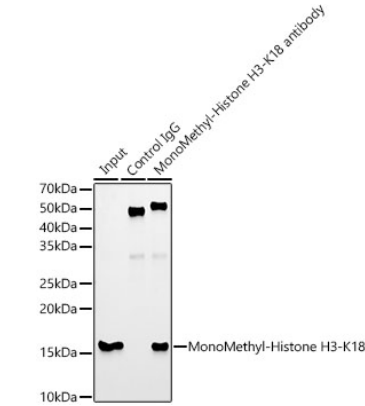
☎ | 400-999-6126

✉ | cn.market@abclonal.com.cn

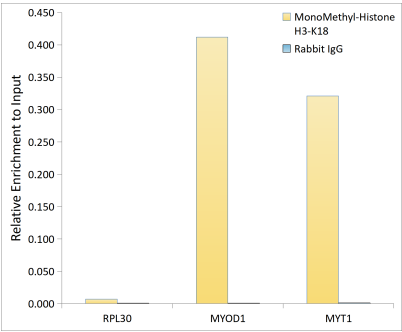
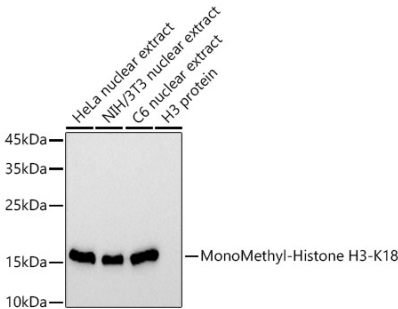
🌐 | www.abclonal.com.cn

Validation Data

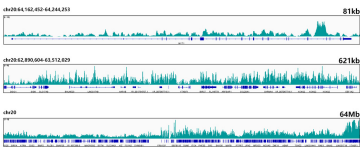
Immunoprecipitation analysis of 600 µg extracts of 293F cells using 5 µg MonoMethyl-Histone H3-K18 antibody (A20680). Western blot was performed from the immunoprecipitate using MonoMethyl-Histone H3-K18 antibody (A20680) at a dilution of 1:1000.



Western blot analysis of various lysates using MonoMethyl-Histone H3-K18 Rabbit mAb (A20680) at 1:1000 dilution.
Secondary antibody: HRP-conjugated Goat anti-Rabbit IgG (H+L) (AS014) at 1:10000 dilution.
Lysates/proteins: 25µg per lane.
Blocking buffer: 3% nonfat dry milk in TBST.
Detection: ECL Basic Kit (RM00020).
Exposure time: 30s.



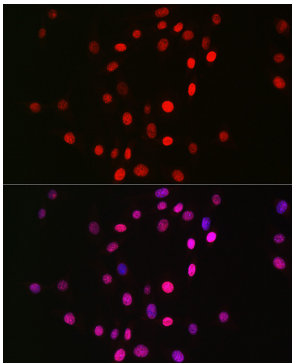
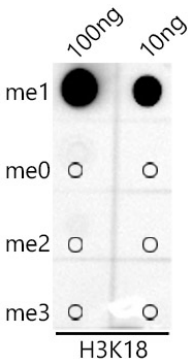
Chromatin immunoprecipitation analysis of extracts of HeLa cells, using MonoMethyl-Histone H3-K18 antibody (A20680) and rabbit IgG. The amount of immunoprecipitated DNA was checked by quantitative PCR. Histogram was constructed by the ratios of the immunoprecipitated DNA to the input.



CUT&Tag was performed using the CUT&Tag

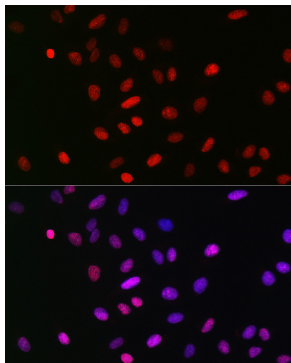
Dot-blot analysis of all sorts of peptides

Immunofluorescence analysis of NIH/3T3



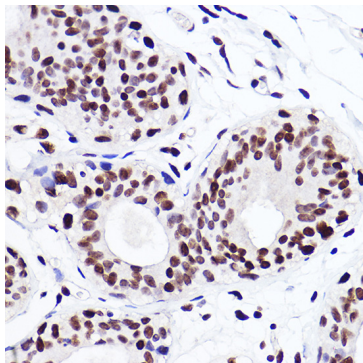
Validation Data

Assay Kit (pAG-Tn5) for Illumina(RK20265) from 10^5 K562 cells with 1 μ g MonoMethyl-Histone H3-K18 Rabbit mAb(A20680), along with a Goat Anti-Rabbit IgG(H+L). The CUT&Tag results indicate the enrichment pattern of H3K18Me1 in representative gene loci (MYT1), as shown in figure.



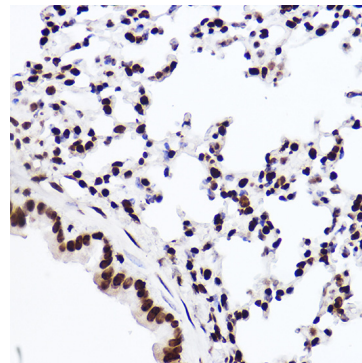
Immunofluorescence analysis of U-2 OS cells using MonoMethyl-Histone H3-K18 Rabbit mAb (A20680) at dilution of 1:100 (40x lens). Secondary antibody: Cy3-conjugated Goat anti-Rabbit IgG (H+L) (AS007) at 1:500 dilution. Blue: DAPI for nuclear staining.

using MonoMethyl-Histone H3-K18 antibody (A20680) at 1:1000 dilution.

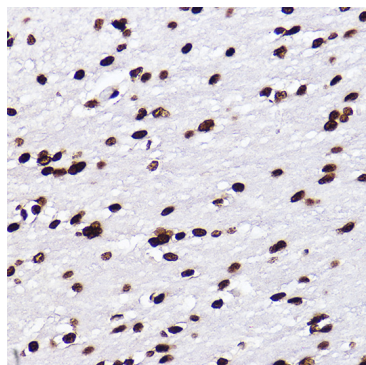


Immunohistochemistry analysis of paraffin-embedded Human breast cancer using MonoMethyl-Histone H3-K18 Rabbit mAb (A20680) at dilution of 1:100 (40x lens). High pressure antigen retrieval performed with 0.01M Citrate buffer (pH 6.0) prior to IHC staining.

cells using MonoMethyl-Histone H3-K18 Rabbit mAb (A20680) at dilution of 1:100 (40x lens). Secondary antibody: Cy3-conjugated Goat anti-Rabbit IgG (H+L) (AS007) at 1:500 dilution. Blue: DAPI for nuclear staining.



Immunohistochemistry analysis of paraffin-embedded Mouse lung using MonoMethyl-Histone H3-K18 Rabbit mAb (A20680) at dilution of 1:100 (40x lens). High pressure antigen retrieval performed with 0.01M Citrate buffer (pH 6.0) prior to IHC staining.



Immunohistochemistry analysis of paraffin-embedded Rat brain using MonoMethyl-Histone H3-K18 Rabbit mAb (A20680) at dilution of 1:100 (40x lens). High pressure antigen retrieval performed with 0.01M Citrate buffer (pH 6.0) prior to IHC staining.