

# OsHI-LOX Rabbit pAb

Catalog No.: A20642

## Basic Information

### Observed MW

103kDa

### Calculated MW

103kDa

### Category

Primary antibody

### Applications

WB, ELISA

### Cross-Reactivity

Oryza sativa

## Background

Plant lipoxygenase may be involved in a number of diverse aspects of plant physiology including growth and development, pest resistance, and senescence or responses to wounding.

## Recommended Dilutions

**WB** 1:500 - 1:2000

**ELISA** Recommended starting concentration is 1 µg/mL. Please optimize the concentration based on your specific assay requirements.

## Immunogen Information

### Gene ID

4345993

### Swiss Prot

Q0J4K2

### Immunogen

Recombinant protein (or fragment). This information is considered to be commercially sensitive.

### Synonyms

LOX8; LOX2.1; CM-LOX1; lox2osPil; OsHI-LOX

## Contact

 | 400-999-6126

 | [cn.market@abclonal.com.cn](mailto:cn.market@abclonal.com.cn)

 | [www.abclonal.com.cn](http://www.abclonal.com.cn)

## Product Information

### Source

Rabbit

### Isotype

IgG

### Purification

Affinity purification

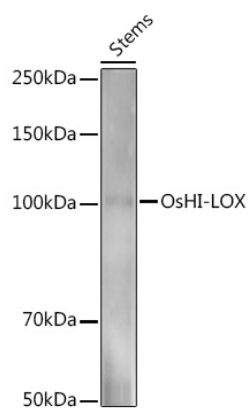
### Storage

Store at -20°C. Avoid freeze / thaw cycles.

Buffer: PBS with 0.05% proclin300, 50% glycerol, pH7.3.

## Validation Data

---



Western blot analysis of extracts of various tissues from the japonica rice (*Oryza sativa* L.) variety Zhonghua 11, using OsHI-LOX Rabbit pAb (A20642) at 1:1000 dilution.

Secondary antibody: HRP-conjugated Goat anti-Rabbit IgG (H+L) (AS014) at 1:10000 dilution.

Lysates/proteins: 25µg per lane.

Blocking buffer: 3% nonfat dry milk in TBST.

Detection: ECL Basic Kit (RM00020).

Exposure time: 120s.