

# OsSERK2 Rabbit pAb

Catalog No.: A20637

## Basic Information

### Observed MW

70kDa

### Calculated MW

70kDa

### Category

Primary antibody

### Applications

WB, ELISA

### Cross-Reactivity

Oryza sativa

## Background

LRR receptor kinase involved in positive regulation of somatic embryogenesis and defense response against the rice blast fungus pathogen *Magnaporthe oryzae*. Involved in the positive regulation of receptor kinase-mediated immunity. Required for immunity mediated by the LRR receptor kinases XA21 and XA26/XA3 which recognize effectors from the bacterial pathogen *Xanthomonas oryzae* pv. *oryzae* (Xoo). Required for the immune response mediated by the LRR receptor kinase FLS2 which recognizes specifically the bacterial flagellin (flg22) effector. Kinase activity and direct interaction with the immune receptors is critical for their function

## Recommended Dilutions

**WB** 1:500 - 1:2000

**ELISA** Recommended starting concentration is 1 µg/mL. Please optimize the concentration based on your specific assay requirements.

## Immunogen Information

### Gene ID

4336035

### Swiss Prot

Q7XV05

### Immunogen

Recombinant protein (or fragment). This information is considered to be commercially sensitive.

### Synonyms

OsSERK1; OsSERK2

## Contact

☎ | 400-999-6126

✉ | [cn.market@abclonal.com.cn](mailto:cn.market@abclonal.com.cn)

🌐 | [www.abclonal.com.cn](http://www.abclonal.com.cn)

## Product Information

### Source

Rabbit

### Isotype

IgG

### Purification

Affinity purification

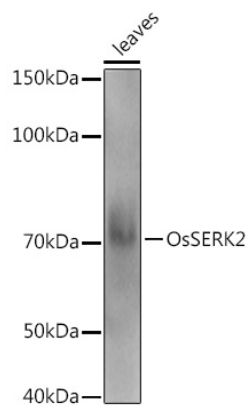
### Storage

Store at -20°C. Avoid freeze / thaw cycles.

Buffer: PBS with 0.05% proclin300, 50% glycerol, pH7.3.

## Validation Data

---



Western blot analysis of extracts of various tissues from the japonica rice (*Oryza sativa* L.) variety Zhonghua 11, using OsSERK2 Rabbit pAb (A20637) at 1:1000 dilution.

Secondary antibody: HRP-conjugated Goat anti-Rabbit IgG (H+L) (AS014) at 1:10000 dilution.

Lysates/proteins: 25µg per lane.

Blocking buffer: 3% nonfat dry milk in TBST.

Detection: ECL Enhanced Kit (RM00021).

Exposure time: 10s.