

OsGF14e Rabbit pAb

Catalog No.: A20628

Basic Information

Observed MW

35kDa

Calculated MW

35kDa

Category

Primary antibody

Applications

WB, ELISA

Cross-Reactivity

Oryza sativa

Background

Transcription factor involved in abscisic acid (ABA) signaling pathway Transcription factor activity is fully activated by ABA.

Recommended Dilutions

WB 1:500 - 1:2000

ELISA Recommended starting concentration is 1 µg/mL. Please optimize the concentration based on your specific assay requirements.

Immunogen Information

Gene ID

4329775

Swiss Prot

Q69TW5

Immunogen

Recombinant protein (or fragment). This information is considered to be commercially sensitive.

Synonyms

GID2; GF14E; OsJ_07268; OJ1115_A05.5-1; OsGF14e

Contact

 | 400-999-6126

 | cn.market@abclonal.com.cn

 | www.abclonal.com.cn

Product Information

Source

Rabbit

Isotype

IgG

Purification

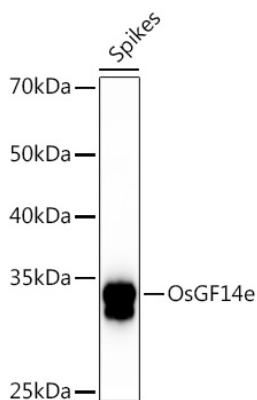
Affinity purification

Storage

Store at -20°C. Avoid freeze / thaw cycles.

Buffer: PBS with 0.05% proclin300, 50% glycerol, pH7.3.

Validation Data



Western blot analysis of extracts of various tissues from the japonica rice (*Oryza sativa* L.) variety Zhonghua 11, using OsGF14e Rabbit pAb (A20628) at 1:1000 dilution.

Secondary antibody: HRP-conjugated Goat anti-Rabbit IgG (H+L) (AS014) at 1:10000 dilution.

Lysates/proteins: 25µg per lane.

Blocking buffer: 3% nonfat dry milk in TBST.

Detection: ECL Basic Kit (RM00020).

Exposure time: 30s.