

OsIRE1 Rabbit pAb

Catalog No.: A20585

Basic Information

Observed MW

90kDa

Calculated MW

99kDa

Category

Primary antibody

Applications

WB, ELISA

Cross-Reactivity

Oryza sativa

Background

Involved in endoplasmic reticulum (ER) stress response. Senses unfolded proteins in the lumen of the ER via its N-terminal domain which leads to enzyme auto-activation. The active endoribonuclease domain splices bZIP50 mRNA to generate a new C-terminus, converting it into a potent unfolded-protein response (UPR) transcriptional activator, which then induces transcription of UPR target genes, such as luminal-binding protein (BiP) chaperones.

Recommended Dilutions

WB 1:500 - 1:2000

ELISA Recommended starting concentration is 1 µg/mL. Please optimize the concentration based on your specific assay requirements.

Immunogen Information

Gene ID

4343198

Swiss Prot

Q7XIT1

Immunogen

Recombinant protein (or fragment). This information is considered to be commercially sensitive.

Synonyms

IRE1; OsIRE1; OsIre1p; OsJ_24190; OJ1103_E04.109

Contact

☎ | 400-999-6126

✉ | cn.market@abclonal.com.cn

🌐 | www.abclonal.com.cn

Product Information

Source

Rabbit

Isotype

IgG

Purification

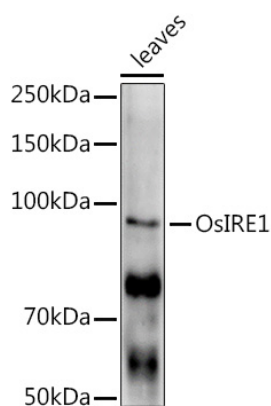
Affinity purification

Storage

Store at -20°C. Avoid freeze / thaw cycles.

Buffer: PBS with 0.02% sodium azide, 50% glycerol, pH 7.3.

Validation Data



Western blot analysis of extracts of various tissues from the japonica rice (*Oryza sativa* L.) variety Zhonghua 11, using OsIRE1 Rabbit pAb (A20585) at 1:1000 dilution.
Secondary antibody: HRP-conjugated Goat anti-Rabbit IgG (H+L) (AS014) at 1:10000 dilution.
Lysates/proteins: 25µg per lane.
Blocking buffer: 3% nonfat dry milk in TBST.
Detection: ECL Enhanced Kit (RM00021).
Exposure time: 300s.