

RUNX1 Rabbit pAb

Catalog No.: A2055

2 Publications

Basic Information

Observed MW

55kDa

Calculated MW

49kDa

Category

Primary antibody

Applications

WB, IHC-P, IF/ICC, ELISA

Cross-Reactivity

Human, Mouse, Rat

Background

Core binding factor (CBF) is a heterodimeric transcription factor that binds to the core element of many enhancers and promoters. The protein encoded by this gene represents the alpha subunit of CBF and is thought to be involved in the development of normal hematopoiesis. Chromosomal translocations involving this gene are well-documented and have been associated with several types of leukemia. Three transcript variants encoding different isoforms have been found for this gene.

Recommended Dilutions

WB 1:500 - 1:700

IHC-P 1:50 - 1:100

IF/ICC 1:50 - 1:100

ELISA Recommended starting concentration is 1 µg/mL. Please optimize the concentration based on your specific assay requirements.

Immunogen Information

Gene ID

861

Swiss Prot

Q01196

Immunogen

Synthetic peptide. This information is considered to be commercially sensitive.

Synonyms

AML1; CBFA2; EVI-1; AMLCR1; PEBP2aB; CBF2alpha; AML1-EVI-1; PEBP2alpha; RUNX1

Contact

☎ | 400-999-6126

✉ | cn.market@abclonal.com.cn

🌐 | www.abclonal.com.cn

Product Information

Source

Rabbit

Isotype

IgG

Purification

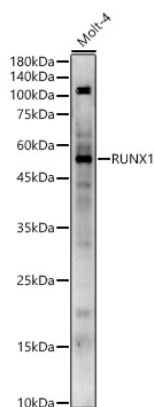
Affinity purification

Storage

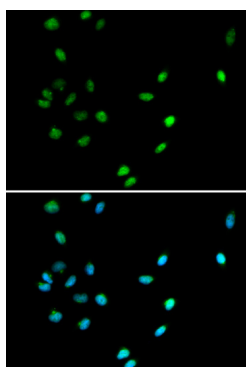
Store at -20°C. Avoid freeze / thaw cycles.

Buffer: PBS with 0.09% Sodium azide, 50% glycerol, pH7.3.

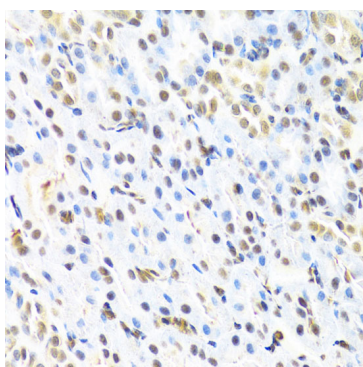
Validation Data



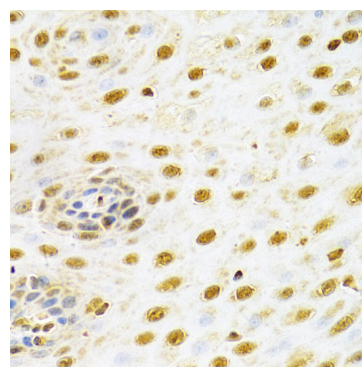
Western blot analysis of lysates from Molt-4 cells, using RUNX1 Rabbit pAb (A2055) at 1:700 dilution.
Secondary antibody: HRP-conjugated Goat anti-Rabbit IgG (H+L) (AS014) at 1:10000 dilution.
Lysates/proteins: 25µg per lane.
Blocking buffer: 3% nonfat dry milk in TBST.
Detection: ECL Enhanced Kit (RM00021).
Exposure time: 60s.



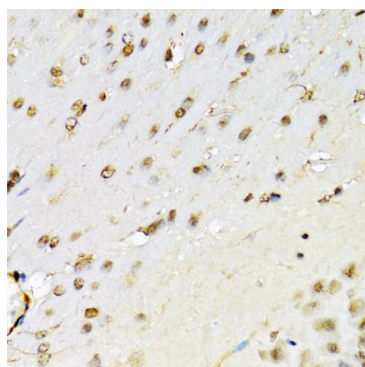
Immunofluorescence analysis of A549 cells using RUNX1 Rabbit pAb (A2055). Secondary antibody: Cy3-conjugated Goat anti-Rabbit IgG (H+L) (AS007) at 1:500 dilution. Blue: DAPI for nuclear staining.



Immunohistochemistry analysis of paraffin-embedded Rat kidney using RUNX1 Rabbit pAb (A2055) at dilution of 1:100 (40x lens). Microwave antigen retrieval performed with 0.01M PBS Buffer (pH 7.2) prior to IHC staining.



Immunohistochemistry analysis of paraffin-embedded Human esophageal cancer using RUNX1 Rabbit pAb (A2055) at dilution of 1:100 (40x lens). Microwave antigen retrieval performed with 0.01M PBS Buffer (pH 7.2) prior to IHC staining.



Immunohistochemistry analysis of paraffin-embedded Mouse brain using RUNX1 Rabbit pAb (A2055) at dilution of 1:100 (40x lens). Microwave antigen retrieval performed with 0.01M PBS Buffer (pH 7.2) prior to IHC staining.