

# Pan-Succinyl-K Rabbit pAb

Catalog No.: A20503

## Basic Information

### Observed MW

10-150 kDa

### Calculated MW

### Category

Primary antibody

### Applications

WB, ELISA

### Cross-Reactivity

Human, Mouse, Rat

## Background

Succinylation of protein is a kind of post-translational modification of protein mainly occurring on lysine residues. Compared with methylation and acetylation, succinylation of lysine has a greater effect on protein structure and function. Sirt5 is an important de-succinylation modifying enzyme involved in the regulation of a variety of biological processes, such as reactive oxygen species defense, fatty acid metabolism and cell apoptosis

## Recommended Dilutions

**WB** 1:500 - 1:5000

**ELISA** Recommended starting concentration is 1 µg/mL. Please optimize the concentration based on your specific assay requirements.

## Immunogen Information

**Gene ID**

**Swiss Prot**

### Immunogen

Synthetic peptide. This information is considered to be commercially sensitive.

### Synonyms

## Contact

 | 400-999-6126

 | [cn.market@abclonal.com.cn](mailto:cn.market@abclonal.com.cn)

 | [www.abclonal.com.cn](http://www.abclonal.com.cn)

## Product Information

### Source

Rabbit

### Isotype

IgG

### Purification

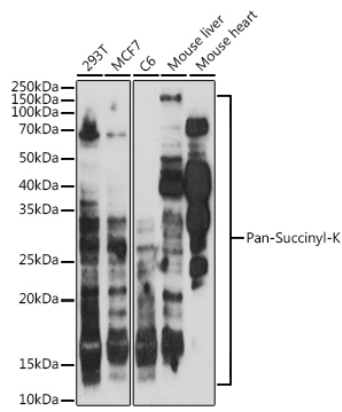
Affinity purification

### Storage

Store at -20°C. Avoid freeze / thaw cycles.

Buffer: PBS with 0.09% Sodium azide, 50% glycerol, pH7.3.

Validation Data



Western blot analysis of various lysates using Pan-Succinyl-K Rabbit pAb (A20503) at 1:1000 dilution. Secondary antibody: HRP-conjugated Goat anti-Rabbit IgG (H+L) (AS014) at 1:10000 dilution. Lysates/proteins: 25µg per lane. Blocking buffer: 3% nonfat dry milk in TBST. Detection: ECL Basic Kit (RM00020). Exposure time: 180s.