

# PCK1 Rabbit pAb

Catalog No.: A2036

12 Publications

## Basic Information

**Observed MW**

69kDa

**Calculated MW**

69kDa

**Category**

Primary antibody

**Applications**

WB, IP, IF/ICC, IF-P, ELISA

**Cross-Reactivity**

Human, Mouse, Rat

## Background

This gene is a main control point for the regulation of gluconeogenesis. The cytosolic enzyme encoded by this gene, along with GTP, catalyzes the formation of phosphoenolpyruvate from oxaloacetate, with the release of carbon dioxide and GDP. The expression of this gene can be regulated by insulin, glucocorticoids, glucagon, cAMP, and diet. Defects in this gene are a cause of cytosolic phosphoenolpyruvate carboxykinase deficiency. A mitochondrial isozyme of the encoded protein also has been characterized.

## Recommended Dilutions

**WB** 1:500 - 1:1000**IP** 0.5µg-4µg antibody for  
400µg-600µg extracts of  
whole cells**IF/ICC** 1:50 - 1:200**IF-P** 1:50 - 1:200**ELISA** Recommended starting  
concentration is 1 µg/mL.  
Please optimize the  
concentration based on  
your specific assay  
requirements.

## Immunogen Information

**Gene ID**

5105

**Swiss Prot**

P35558

**Immunogen**

Recombinant protein (or fragment). This information is considered to be commercially sensitive.

**Synonyms**

PCKDC; PEPCK1; PEPCKC; PEPCK-C; PCK1

## Product Information

**Source**

Rabbit

**Isotype**

IgG

**Purification**

Affinity purification

**Storage**

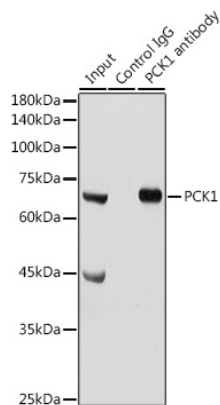
Store at -20°C. Avoid freeze / thaw cycles.

Buffer: PBS containing 50% glycerol, preserved with proclin300 or sodium azide (as specified on the Certificate of Analysis), pH 7.3.

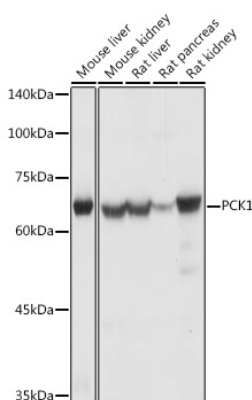
## Contact

 | 400-999-6126 | [cn.market@abclonal.com.cn](mailto:cn.market@abclonal.com.cn) | [www.abclonal.com.cn](http://www.abclonal.com.cn)

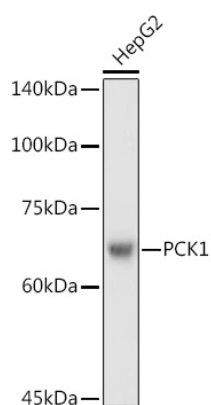
## Validation Data



Immunoprecipitation analysis of 300 µg extracts of Mouse liver cells using 3 µg PCK1 antibody (A2036). Western blot was performed from the immunoprecipitate using PCK1 antibody (A2036) at a dilution of 1:1000.



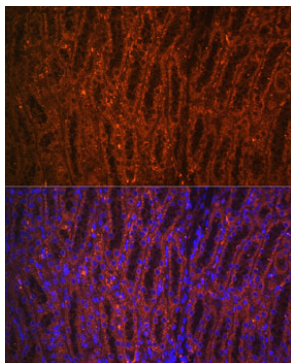
Western blot analysis of various lysates using PCK1 Rabbit pAb (A2036) at 1:1000 dilution. Secondary antibody: HRP-conjugated Goat anti-Rabbit IgG (H+L) (AS014) at 1:10000 dilution. Lysates/proteins: 25µg per lane. Blocking buffer: 3% nonfat dry milk in TBST. Detection: ECL Basic Kit (RM00020). Exposure time: 1s.



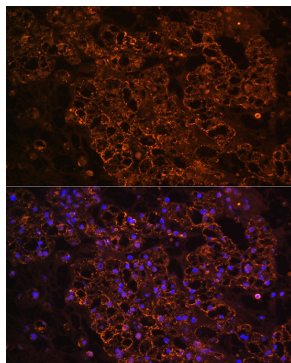
Western blot analysis of lysates from HepG2 cells, using PCK1 Rabbit pAb (A2036) at 1:1000 dilution. Secondary antibody: HRP-conjugated Goat anti-Rabbit IgG (H+L) (AS014) at 1:10000 dilution. Lysates/proteins: 25µg per lane. Blocking buffer: 3% nonfat dry milk in TBST. Detection: ECL Basic Kit (RM00020). Exposure time: 3s.

## Validation Data

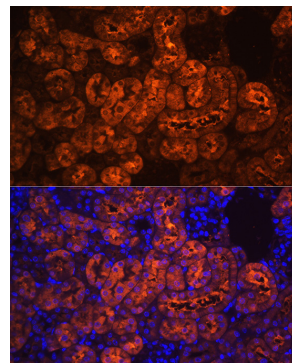
---



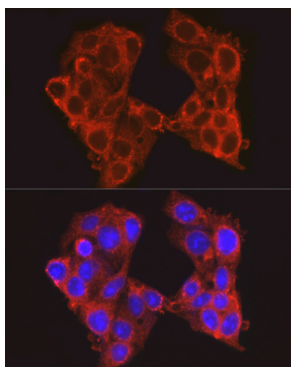
Immunofluorescence analysis of paraffin-embedded rat kidney using PCK1 Rabbit pAb (A2036) at dilution of 1:100 (40x lens). Secondary antibody: Cy3-conjugated Goat anti-Rabbit IgG (H+L) (AS007) at 1:500 dilution. Blue: DAPI for nuclear staining.



Immunofluorescence analysis of paraffin-embedded human kidney cancer using PCK1 Rabbit pAb (A2036) at dilution of 1:100 (40x lens). Secondary antibody: Cy3-conjugated Goat anti-Rabbit IgG (H+L) (AS007) at 1:500 dilution. Blue: DAPI for nuclear staining.



Immunofluorescence analysis of paraffin-embedded mouse kidney using PCK1 Rabbit pAb (A2036) at dilution of 1:100 (40x lens). Secondary antibody: Cy3-conjugated Goat anti-Rabbit IgG (H+L) (AS007) at 1:500 dilution. Blue: DAPI for nuclear staining.



Immunofluorescence analysis of HepG2 cells using PCK1 Rabbit pAb (A2036) at dilution of 1:100 (40x lens). Secondary antibody: Cy3-conjugated Goat anti-Rabbit IgG (H+L) (AS007) at 1:500 dilution. Blue: DAPI for nuclear staining.