

OsMADS1 Rabbit pAb

Catalog No.: A20328 **2 Publications**

Basic Information

Observed MW

Refer to figures

Calculated MW

30kDa

Category

Primary antibody

Applications

WB, ELISA

Cross-Reactivity

Oryza sativa

Background

Probable transcription factor involved in the development of floral organs. Required for the formation of inner floral organs (lodicules, stamens and carpels, or whorls 2, 3 and 4 and the lemma and palea (whorl 1, which are grass floral organs analogous to sepals. May be involved in the control of flowering time. Seems to act as transcriptional activator. May act upstream of the auxin-responsive protein GH3.8.

Recommended Dilutions

WB 1:500 - 1:2000

ELISA Recommended starting concentration is 1 µg/mL. Please optimize the concentration based on your specific assay requirements.

Immunogen Information

Gene ID

4332059

Swiss Prot

Q10PZ9

Immunogen

Recombinant protein (or fragment). This information is considered to be commercially sensitive.

Synonyms

Lhs1; MADS1; OsMADS1; OsJ_09913

Contact

☎ | 400-999-6126

✉ | cn.market@abclonal.com.cn

🌐 | www.abclonal.com.cn

Product Information

Source

Rabbit

Isotype

IgG

Purification

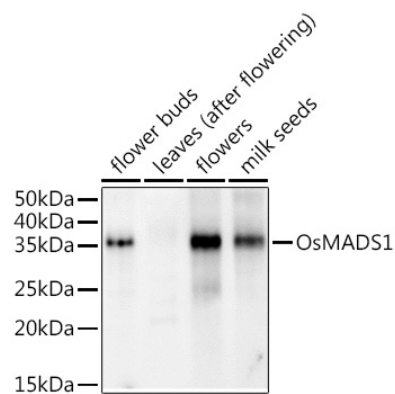
Affinity purification

Storage

Store at -20°C. Avoid freeze / thaw cycles.

Buffer: PBS with 0.01% thimerosal, 50% glycerol, pH 7.3.

Validation Data



Western blot analysis of extracts of various tissues from the japonica rice (*Oryza sativa* L.) variety Zhonghua 11, using OsMADS1 Rabbit pAb (A20328) at 1:1000 dilution.

Secondary antibody: HRP-conjugated Goat anti-Rabbit IgG (H+L) (AS014) at 1:10000 dilution.

Lysates/proteins: 25µg per lane.

Blocking buffer: 3% nonfat dry milk in TBST.

Detection: ECL Enhanced Kit (RM00021).

Exposure time: 120s.