

OsRDR6 Rabbit pAb

Catalog No.: A20319 **2 Publications**

Basic Information

Observed MW

140kDa

Calculated MW

137kDa

Category

Primary antibody

Applications

WB, ELISA

Cross-Reactivity

Oryza sativa

Background

Involved in the RNA silencing pathway. Probably required for the generation of small interfering RNAs (siRNAs). Regulates shoot apical meristem (SAM) initiation and maintenance and leaf polarization through the trans-acting siRNAs (ta-siRNAs) pathway which probably modulates the expression of the ARF2, ARF3, ARF4, ARF14 and ARF15 genes.

Recommended Dilutions

WB 1:500 - 1:2000

ELISA Recommended starting concentration is 1 µg/mL. Please optimize the concentration based on your specific assay requirements.

Immunogen Information

Gene ID

4323938

Swiss Prot

Q8LHH9

Immunogen

Recombinant protein (or fragment). This information is considered to be commercially sensitive.

Synonyms

SHL2; SHOOTLESS2; OsRDR6

Contact

☎ | 400-999-6126

✉ | cn.market@abclonal.com.cn

🌐 | www.abclonal.com.cn

Product Information

Source

Rabbit

Isotype

IgG

Purification

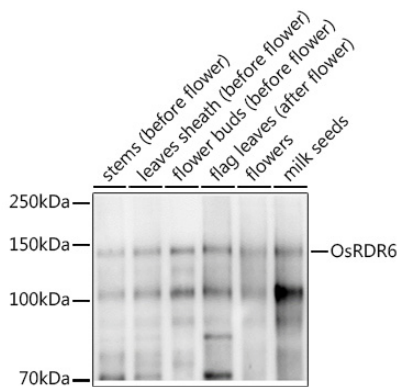
Affinity purification

Storage

Store at -20°C. Avoid freeze / thaw cycles.

Buffer: PBS with 0.01% thimerosal, 50% glycerol, pH7.3.

Validation Data



Western blot analysis of extracts of various tissues from the japonica rice (*Oryza sativa* L.) variety Zhonghua 11, using OsRDR6 Rabbit pAb (A20319) at 1:1000 dilution.
Secondary antibody: HRP-conjugated Goat anti-Rabbit IgG (H+L) (AS014) at 1:10000 dilution.
Lysates/proteins: 25µg per lane.
Blocking buffer: 3% nonfat dry milk in TBST.
Detection: ECL Enhanced Kit (RM00021).
Exposure time: 30s.