

[KO Validated] Edf1 Rabbit pAb

Catalog No.: A20274 **KO** Validated

Basic Information

Observed MW

17kDa

Calculated MW

16kDa

Category

Primary antibody

Applications

WB, ELISA

Cross-Reactivity

Human, Mouse

Background

Predicted to enable TFIIID-class transcription factor complex binding activity and transcription coactivator activity. Predicted to be involved in positive regulation of DNA binding activity. Predicted to act upstream of or within cell differentiation. Predicted to be located in cytosol; nucleolus; and nucleoplasm. Predicted to be active in nucleus. Is expressed in several structures, including central nervous system; genitourinary system; heart; liver; and retina. Orthologous to human EDF1 (endothelial differentiation related factor 1).

Recommended Dilutions

WB 1:500 - 1:1000

ELISA Recommended starting concentration is 1 µg/mL. Please optimize the concentration based on your specific assay requirements.

Immunogen Information

Gene ID

59022

Swiss Prot

Q9JMG1

Immunogen

Recombinant protein (or fragment). This information is considered to be commercially sensitive.

Synonyms

MBF1; 0610008L11Rik; f1

Contact

☎ | 400-999-6126

✉ | cn.market@abclonal.com.cn

🌐 | www.abclonal.com.cn

Product Information

Source

Rabbit

Isotype

IgG

Purification

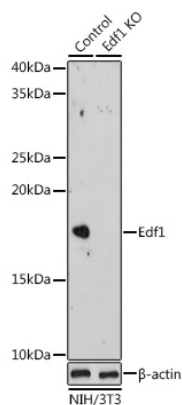
Affinity purification

Storage

Store at -20°C. Avoid freeze / thaw cycles.

Buffer: PBS containing 50% glycerol, preserved with proclin300 or sodium azide (as specified on the Certificate of Analysis), pH 7.3.

Validation Data



Western blot analysis of lysates from wild type (WT) and Edf1 knockout (KO) NIH/3T3 cells, using [KO Validated] Edf1 Rabbit pAb (A20274) at 1:1000 dilution.

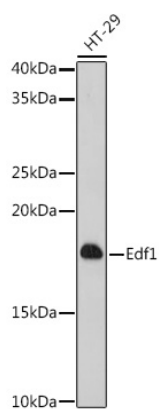
Secondary antibody: HRP-conjugated Goat anti-Rabbit IgG (H+L) (AS014) at 1:10000 dilution.

Lysates/proteins: 25 μ g per lane.

Blocking buffer: 3% nonfat dry milk in TBST.

Detection: ECL Enhanced Kit (RM00021).

Exposure time: 180s.



Western blot analysis of lysates from HT-29 cells, using [KO Validated] Edf1 Rabbit pAb (A20274) at 1:1000 dilution.

Secondary antibody: HRP-conjugated Goat anti-Rabbit IgG (H+L) (AS014) at 1:10000 dilution.

Lysates/proteins: 25 μ g per lane.

Blocking buffer: 3% nonfat dry milk in TBST.

Detection: ECL Enhanced Kit (RM00021).

Exposure time: 180s.