

GSDMD (Full length+N terminal) Rabbit pAb

Catalog No.: A20197

55 Publications

Basic Information

Observed MW

53 kDa (Full length) /30 kDa (N terminal)

Calculated MW

53kDa

Category

Primary antibody

Applications

WB,IF/ICC,ELISA

Cross-Reactivity

Human, Mouse, Rat

Background

Gasdermin D is a member of the gasdermin family. Members of this family appear to play a role in regulation of epithelial proliferation. Gasdermin D has been suggested to act as a tumor suppressor. Alternatively spliced transcript variants have been described.

Recommended Dilutions

WB 1:5000 - 1:20000

IF/ICC 1:50 - 1:200

ELISA Recommended starting concentration is 1 µg/mL. Please optimize the concentration based on your specific assay requirements.

Immunogen Information

Gene ID

79792

Swiss Prot

P57764

Immunogen

Recombinant protein (or fragment). This information is considered to be commercially sensitive.

Synonyms

DF5L; DFNA5L; FKSG10; GSDMDC1; GSDMD (Full Length+N terminal)

Contact

☎ | 400-999-6126

✉ | cn.market@abclonal.com.cn

🌐 | www.abclonal.com.cn

Product Information

Source

Rabbit

Isotype

IgG

Purification

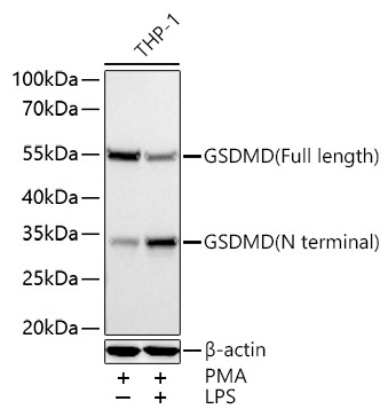
Affinity purification

Storage

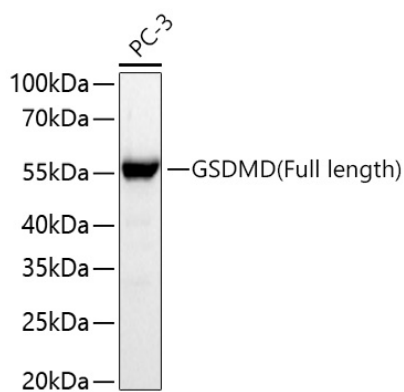
Store at -20°C. Avoid freeze / thaw cycles.

Buffer: PBS with 0.09% Sodium azide, 50% glycerol, pH7.3.

Validation Data



Western blot analysis of various lysates using GSDMD (Full length+N terminal) Rabbit pAb (A20197) at 1:13000 dilution incubated overnight at 4°C. THP-1 cells were treated with PMA (80 nm) at 37°C for 24 hours. THP-1 cells were treated with PMA (80 nm) at 37°C for 48 hours, LPS (5 µg/mL) for 6 hours. Secondary antibody: HRP-conjugated Goat anti-Rabbit IgG (H+L) (AS014) at 1:10000 dilution. Lysates/proteins: 30 µg per lane. Blocking buffer: 3% nonfat dry milk in TBST. Detection: ECL Basic Kit (RM00020). Exposure time: 20 s.



Western blot analysis of lysates from PC-3 cells using GSDMD (Full length+N terminal) Rabbit pAb (A20197) at 1:13000 dilution incubated overnight at 4°C. Secondary antibody: HRP-conjugated Goat anti-Rabbit IgG (H+L) (AS014) at 1:10000 dilution. Lysates/proteins: 25 µg per lane. Blocking buffer: 3% nonfat dry milk in TBST. Detection: ECL Basic Kit (RM00020). Exposure time: 20 s.