

## [KO Validated] RAB1B Rabbit pAb

Catalog No.: A19935 **KO** **Validated** **1 Publications**

### Basic Information

#### Observed MW

22kDa

#### Calculated MW

22kDa

#### Category

Primary antibody

#### Applications

ELISA, WB

#### Cross-Reactivity

Human, Mouse, Rat

### Background

Members of the RAB protein family, such as RAB1B, are low molecular mass monomeric GTPases localized on the cytoplasmic surfaces of distinct membrane-bound organelles. RAB1B functions in the early secretory pathway and is essential for vesicle transport between the endoplasmic reticulum (ER) and Golgi (Chen et al., 1997 [PubMed 9030196]; Alvarez et al., 2003 [PubMed 12802079]).

### Recommended Dilutions

**WB** 1:500 - 1:2000

### Immunogen Information

#### Gene ID

81876

#### Swiss Prot

Q9H0U4

#### Immunogen

Recombinant fusion protein containing a sequence corresponding to amino acids 7-201 of human RAB1B (NP\_112243.1).

#### Synonyms

RAB1B; 1B

### Contact

 | 400-999-6126

 | [cn.market@abclonal.com.cn](mailto:cn.market@abclonal.com.cn)

 | [www.abclonal.com.cn](http://www.abclonal.com.cn)

### Product Information

#### Source

Rabbit

#### Isotype

IgG

#### Purification

Affinity purification

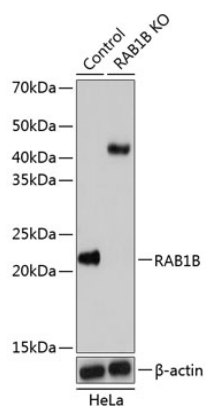
#### Storage

Store at -20°C. Avoid freeze / thaw cycles.

Buffer: PBS with 0.01% thimerosal, 50% glycerol, pH7.3.

## Validation Data

---



Western blot analysis of lysates from wild type (WT) and RAB1B knockout (KO) HeLa cells, using [KO Validated] RAB1B Rabbit pAb (A19935) at 1:1000 dilution.

Secondary antibody: HRP Goat Anti-Rabbit IgG (H+L) (AS014) at 1:10000 dilution.

Lysates/proteins: 25 $\mu$ g per lane.

Blocking buffer: 3% nonfat dry milk in TBST.

Detection: ECL Basic Kit (RM00020).

Exposure time: 1s.