

# [KO Validated] FKBP10 Rabbit pAb

Catalog No.: A19870 **KO** Validated

## Basic Information

### Observed MW

75kDa

### Calculated MW

64kDa

### Category

Primary antibody

### Applications

ELISA, WB

### Cross-Reactivity

Human, Mouse

## Background

The protein encoded by this gene belongs to the FKBP-type peptidyl-prolyl cis/trans isomerase (PPIase) family. This protein localizes to the endoplasmic reticulum and acts as a molecular chaperone. Alternatively spliced variants encoding different isoforms have been reported, but their biological validity has not been determined.

## Recommended Dilutions

WB 1:500 - 1:2000

## Immunogen Information

### Gene ID

60681

### Swiss Prot

Q96AY3

### Immunogen

Recombinant fusion protein containing a sequence corresponding to amino acids 303-582 of human FKBP10 (NP\_068758.3).

### Synonyms

Ol6; BRKS; Ol11; TLH1; BRKS1; FKBP65; PPIASE; hFKBP65; 10

## Contact

☎ | 400-999-6126

✉ | [cn.market@abclonal.com.cn](mailto:cn.market@abclonal.com.cn)

🌐 | [www.abclonal.com.cn](http://www.abclonal.com.cn)

## Product Information

### Source

Rabbit

### Isotype

IgG

### Purification

Affinity purification

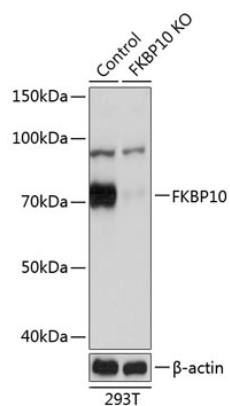
### Storage

Store at -20°C. Avoid freeze / thaw cycles.

Buffer: PBS with 0.01% thimerosal, 50% glycerol, pH7.3.

## Validation Data

---



Western blot analysis of lysates from wild type (WT) and FKBP10 knockout (KO) 293T cells, using [KO Validated] FKBP10 Rabbit pAb (A19870) at 1:3000 dilution.

Secondary antibody: HRP Goat Anti-Rabbit IgG (H+L) (AS014) at 1:10000 dilution.

Lysates/proteins: 25 $\mu$ g per lane.

Blocking buffer: 3% nonfat dry milk in TBST.

Detection: ECL Basic Kit (RM00020).

Exposure time: 1S.