

Ly-6A/E (Sca-1) Rabbit mAb

Catalog No.: A19833 **Recombinant**

Basic Information

Observed MW

15kDa

Calculated MW

14kDa

Category

Primary antibody

Applications

WB,ELISA

Cross-Reactivity

Mouse

CloneNo number

ARC2361

Background

Predicted to enable acetylcholine receptor binding activity and acetylcholine receptor inhibitor activity. Acts upstream of or within response to bacterium. Located in external side of plasma membrane. Is expressed in alimentary system; hindlimb tendon; liver; metanephros; and physiological umbilical hernia. Used to study osteoporosis. Orthologous to human LY6H (lymphocyte antigen 6 family member H).

Recommended Dilutions

WB 1:500 - 1:1000

ELISA Recommended starting concentration is 1 µg/mL. Please optimize the concentration based on your specific assay requirements.

Immunogen Information

Gene ID

110454

Swiss Prot

P05533

Immunogen

Synthetic peptide. This information is considered to be commercially sensitive.

Synonyms

TAP; Sca1; Sca-1; Ly-6A.2; Ly-6A/E; Ly-6E.1; Ly-6A/E (Sca-1)

Contact

☎ | 400-999-6126

✉ | cn.market@abclonal.com.cn

🌐 | www.abclonal.com.cn

Product Information

Source

Rabbit

Isotype

IgG

Purification

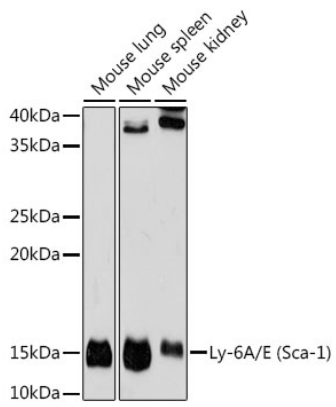
Affinity purification

Storage

Store at -20°C. Avoid freeze / thaw cycles.

Buffer: PBS with 0.02% sodium azide,0.05% BSA,50% glycerol,pH7.3.

Validation Data



Western blot analysis of various lysates using Ly-6A/E (Sca-1) Rabbit mAb (A19833) at 1:1000 dilution.
Secondary antibody: HRP-conjugated Goat anti-Rabbit IgG (H+L) (AS014) at 1:10000 dilution.
Lysates/proteins: 25µg per lane.
Blocking buffer: 3% nonfat dry milk in TBST.
Detection: ECL Basic Kit (RM00020).
Exposure time: 180s.