

BCL2L12 Rabbit mAb

Catalog No.: A19808 **Recombinant**

Basic Information

Observed MW

32kDa

Calculated MW

37kDa

Category

Primary antibody

Applications

WB,IHC-P,IP,ELISA

Cross-Reactivity

Human

CloneNo number

ARC2334

Background

This gene encodes a member of a family of proteins containing a Bcl-2 homology domain 2 (BH2). The encoded protein is an anti-apoptotic factor that acts as an inhibitor of caspases 3 and 7 in the cytoplasm. In the nucleus, it binds to the p53 tumor suppressor protein, preventing its association with target genes. Overexpression of this gene has been detected in a number of different cancers. There is a pseudogene for this gene on chromosome 3. Alternative splicing results in multiple transcript variants.

Recommended Dilutions

WB 1:500 - 1:2000

IHC-P 1:50 - 1:200

IP 0.5µg-4µg antibody for
200µg-400µg extracts of
whole cells

ELISA Recommended starting
concentration is 1 µg/mL.
Please optimize the
concentration based on
your specific assay
requirements.

Contact

☎ | 400-999-6126

✉ | cn.market@abclonal.com.cn

🌐 | www.abclonal.com.cn

Immunogen Information

Gene ID

83596

Swiss Prot

Q9HB09

Immunogen

Recombinant fusion protein containing a sequence corresponding to amino acids 200-300 of human BCL2L12 (Q9HB09).

Synonyms

Product Information

Source

Rabbit

Isotype

IgG

Purification

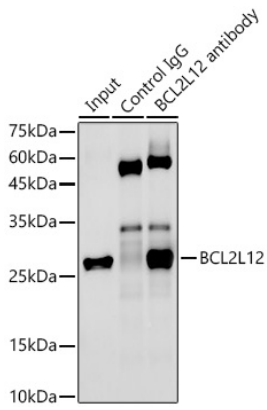
Affinity purification

Storage

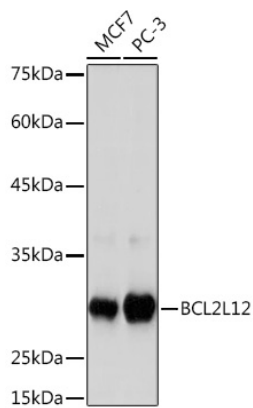
Store at -20°C. Avoid freeze / thaw cycles.

Buffer: PBS with 0.02% sodium azide,0.05% BSA,50% glycerol,pH7.3.

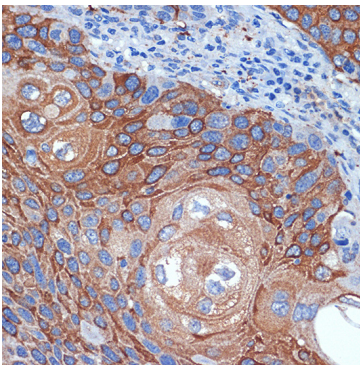
Validation Data



Immunoprecipitation analysis of 300 µg extracts of PC-3 cells using 3 µg BCL2L12 antibody (A19808). Western blot was performed from the immunoprecipitate using BCL2L12 antibody (A19808) at a dilution of 1:500.



Western blot analysis of various lysates using BCL2L12 Rabbit mAb (A19808) at 1:1000 dilution. Secondary antibody: HRP-conjugated Goat anti-Rabbit IgG (H+L) (AS014) at 1:10000 dilution. Lysates/proteins: 25µg per lane. Blocking buffer: 3% nonfat dry milk in TBST. Detection: ECL Basic Kit (RM00020). Exposure time: 180s.



Immunohistochemistry analysis of paraffin-embedded Human esophageal cancer using BCL2L12 Rabbit mAb (A19808) at dilution of 1:100 (40x lens). Microwave antigen retrieval performed with 0.01M Tris/EDTA Buffer (pH 9.0) prior to IHC staining.