

Cytokeratin 18 (KRT18) Rabbit mAb

Catalog No.: A19778

Recombinant

4 Publications

Basic Information

Observed MW

48kDa

Calculated MW

48kDa

Category

Primary antibody

Applications

ELISA, WB, IHC-P, IF/ICC

Cross-Reactivity

Human, Mouse, Rat

CloneNo number

ARC2303

Background

KRT18 encodes the type I intermediate filament chain keratin 18. Keratin 18, together with its filament partner keratin 8, are perhaps the most commonly found members of the intermediate filament gene family. They are expressed in single layer epithelial tissues of the body. Mutations in this gene have been linked to cryptogenic cirrhosis. Two transcript variants encoding the same protein have been found for this gene.

Recommended Dilutions

WB	1:500 - 1:1000
IHC-P	1:500 - 1:1000
IF/ICC	1:50 - 1:200

Immunogen Information

Gene ID

3875

Swiss Prot

P05783

Immunogen

Recombinant fusion protein containing a sequence corresponding to amino acids 250-430 of human Cytokeratin 18 (KRT18) (P05783).

Synonyms

K18; CK-18; CYK18; Cytokeratin 18 (KRT18)

Contact

☎	400-999-6126
✉	cn.market@abclonal.com.cn
🌐	www.abclonal.com.cn

Product Information

Source

Rabbit

Isotype

IgG

Purification

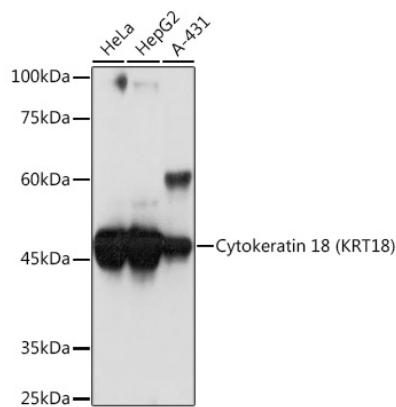
Affinity purification

Storage

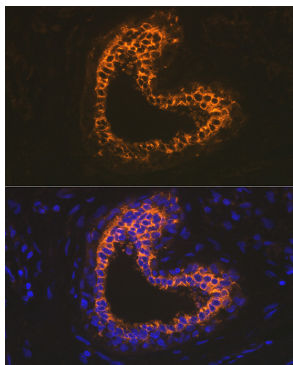
Store at -20°C. Avoid freeze / thaw cycles.

Buffer: PBS with 0.02% sodium azide, 0.05% BSA, 50% glycerol, pH7.3.

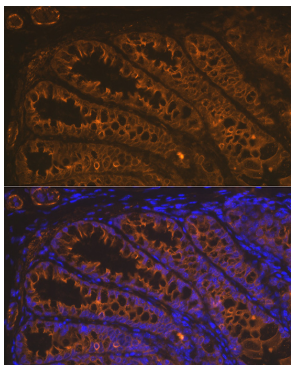
Validation Data



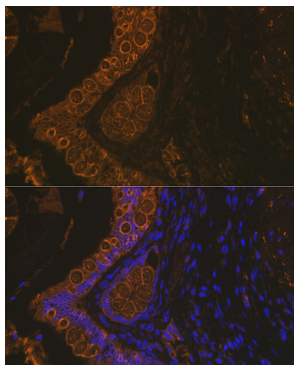
Western blot analysis of extracts of various cell lines, using Cytokeratin 18 (KRT18) Rabbit mAb (A19778) at 1:1000 dilution.
Secondary antibody: HRP Goat Anti-Rabbit IgG (H+L) (AS014) at 1:10000 dilution.
Lysates/proteins: 25µg per lane.
Blocking buffer: 3% nonfat dry milk in TBST.
Detection: ECL Basic Kit (RM00020).
Exposure time: 1s.



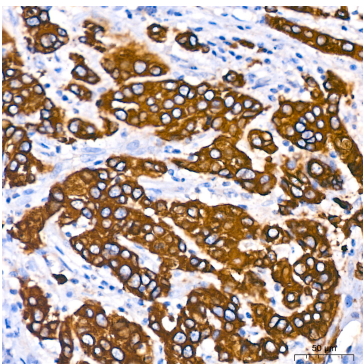
Immunofluorescence analysis of Human mammary cancer using Cytokeratin 18 (KRT18) antibody (A19778) at dilution of 1:100. Blue: DAPI for nuclear staining.



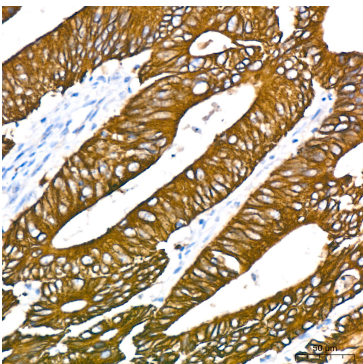
Immunofluorescence analysis of Mouse colon using Cytokeratin 18 (KRT18) antibody (A19778) at dilution of 1:100. Blue: DAPI for nuclear staining.



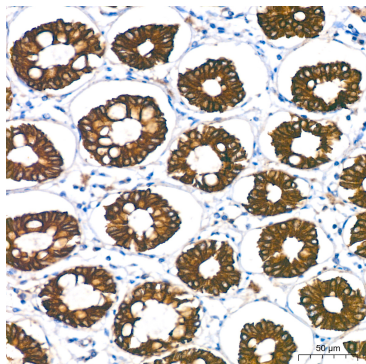
Immunofluorescence analysis of Rat rectum using Cytokeratin 18 (KRT18) antibody (A19778) at dilution of 1:100. Blue: DAPI for nuclear staining.



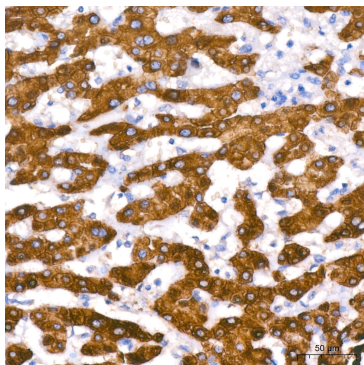
Immunohistochemistry analysis of paraffin-embedded human breast cancer using Cytokeratin 18 (KRT18) Rabbit mAb (A19778) at dilution of 1:800 (40x lens).Perform high pressure antigen retrieval with 10 mM citrate buffer pH 6.0 before commencing with IHC staining protocol.



Immunohistochemistry analysis of paraffin-embedded human colon carcinoma using Cytokeratin 18 (KRT18) Rabbit mAb (A19778) at dilution of 1:800 (40x lens).Perform high pressure antigen retrieval with 10 mM citrate buffer pH 6.0 before commencing with IHC staining protocol.



Immunohistochemistry analysis of paraffin-embedded human colon using Cytokeratin 18 (KRT18) Rabbit mAb (A19778) at dilution of 1:800 (40x lens).Perform high pressure antigen retrieval with 10 mM citrate buffer pH 6.0 before commencing with IHC staining protocol.



Immunohistochemistry analysis of paraffin-embedded human liver using Cytokeratin 18 (KRT18) Rabbit mAb (A19778) at dilution of 1:800 (40x lens). Perform high pressure antigen retrieval with 10 mM citrate buffer pH 6.0 before commencing with IHC staining protocol.