

# PIM1 Rabbit mAb

Catalog No.: A19695

Recombinant

3 Publications

## Basic Information

### Observed MW

34kDa

### Calculated MW

36kDa

### Category

Primary antibody

### Applications

WB,IHC-P,ELISA

### Cross-Reactivity

Human, Mouse, Rat

### CloneNo number

ARC0175

## Background

The protein encoded by this gene belongs to the Ser/Thr protein kinase family, and PIM subfamily. This gene is expressed primarily in B-lymphoid and myeloid cell lines, and is overexpressed in hematopoietic malignancies and in prostate cancer. It plays a role in signal transduction in blood cells, contributing to both cell proliferation and survival, and thus provides a selective advantage in tumorigenesis. Both the human and orthologous mouse genes have been reported to encode two isoforms (with preferential cellular localization) resulting from the use of alternative in-frame translation initiation codons, the upstream non-AUG (CUG) and downstream AUG codons (PMIDs:16186805, 1825810).

## Recommended Dilutions

<b>WB</b>	1:1000 - 1:2000
-----------	-----------------

<b>IHC-P</b>	1:200 - 1:2000
--------------	----------------

<b>ELISA</b>	Recommended starting concentration is 1 µg/mL. Please optimize the concentration based on your specific assay requirements.
--------------	---

## Immunogen Information

### Gene ID

5292

### Swiss Prot

P11309

### Immunogen

Synthetic peptide. This information is considered to be commercially sensitive.

### Synonyms

PIM; PIM1

## Contact

		400-999-6126
--	--	--------------

		cn.market@abclonal.com.cn
--	--	---------------------------

		www.abclonal.com.cn
--	--	---------------------

## Product Information

### Source

Rabbit

### Isotype

IgG

### Purification

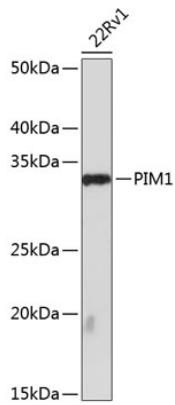
Affinity purification

### Storage

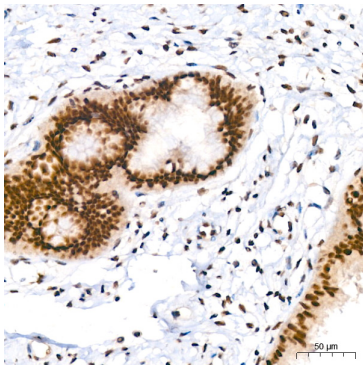
Store at -20°C. Avoid freeze / thaw cycles.

Buffer: PBS containing 50% glycerol and 0.05% BSA, preserved with proclin300 or sodium azide (as specified on the Certificate of Analysis), pH 7.3.

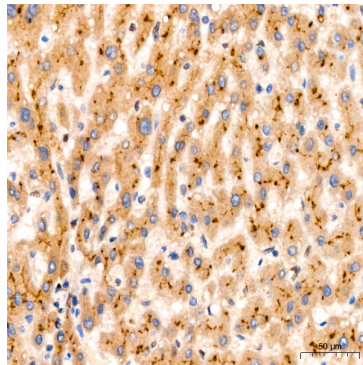
## Validation Data



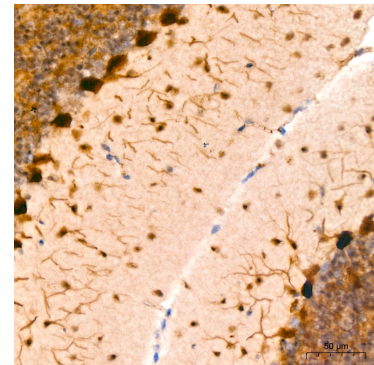
Western blot analysis of lysates from 22Rv1 cells, using PIM1 Rabbit mAb (A19695) at 1:1000 dilution. Secondary antibody: HRP-conjugated Goat anti-Rabbit IgG (H+L) (AS014) at 1:10000 dilution. Lysates/proteins: 25µg per lane. Blocking buffer: 3% nonfat dry milk in TBST. Detection: ECL Basic Kit (RM00020). Exposure time: 90s.



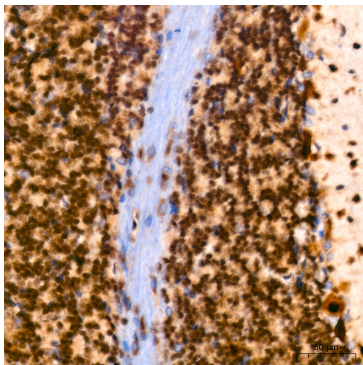
Immunohistochemistry analysis of paraffin-embedded Human cervix using PIM1 Rabbit mAb (A19695) at dilution of 1:200 (40x lens). High pressure antigen retrieval performed with 0.01M Tris/EDTA Buffer (pH 9.0) prior to IHC staining.



Immunohistochemistry analysis of paraffin-embedded Human liver using PIM1 Rabbit mAb (A19695) at dilution of 1:200 (40x lens). High pressure antigen retrieval performed with 0.01M Tris/EDTA Buffer (pH 9.0) prior to IHC staining.



Immunohistochemistry analysis of paraffin-embedded Mouse brain using PIM1 Rabbit mAb (A19695) at dilution of 1:200 (40x lens). High pressure antigen retrieval performed with 0.01M Tris/EDTA Buffer (pH 9.0) prior to IHC staining.



Immunohistochemistry analysis of paraffin-embedded Rat brain using PIM1 Rabbit mAb (A19695) at dilution of 1:200 (40x lens). High pressure antigen retrieval performed with 0.01M Tris/EDTA Buffer (pH 9.0) prior to IHC staining.