

# IKK $\alpha$ Rabbit mAb

Catalog No.: A19694 **Recombinant** **7 Publications**

## Basic Information

### Observed MW

85kDa

### Calculated MW

85kDa

### Category

Primary antibody

### Applications

WB, ELISA

### Cross-Reactivity

Human, Mouse

### CloneNo number

ARC0174

## Background

This gene encodes a member of the serine/threonine protein kinase family. The encoded protein, a component of a cytokine-activated protein complex that is an inhibitor of the essential transcription factor NF-kappa-B complex, phosphorylates sites that trigger the degradation of the inhibitor via the ubiquitination pathway, thereby activating the transcription factor.

## Recommended Dilutions

**WB** 1:1000 - 1:2000

**ELISA** Recommended starting concentration is 1  $\mu$ g/mL. Please optimize the concentration based on your specific assay requirements.

## Immunogen Information

### Gene ID

1147

### Swiss Prot

O15111

### Immunogen

Synthetic peptide. This information is considered to be commercially sensitive.

### Synonyms

BPS2; IKK1; IKKA; IKBKA; TCF16; NFKBIKA; IKK-alpha; IKK $\alpha$

## Contact

 | 400-999-6126

 | [cn.market@abclonal.com.cn](mailto:cn.market@abclonal.com.cn)

 | [www.abclonal.com.cn](http://www.abclonal.com.cn)

## Product Information

### Source

Rabbit

### Isotype

IgG

### Purification

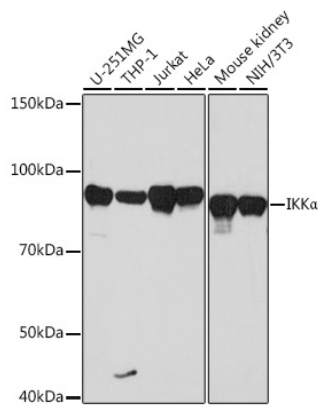
Affinity purification

### Storage

Store at -20°C. Avoid freeze / thaw cycles.

Buffer: PBS containing 50% glycerol and 0.05% BSA, preserved with proclin300 or sodium azide (as specified on the Certificate of Analysis), pH 7.3.

# Validation Data



Western blot analysis of various lysates using IKKα Rabbit mAb (A19694) at 1:1000 dilution.  
Secondary antibody: HRP-conjugated Goat anti-Rabbit IgG (H+L) (AS014) at 1:10000 dilution.  
Lysates/proteins: 25μg per lane.  
Blocking buffer: 3% nonfat dry milk in TBST.  
Detection: ECL Basic Kit (RM00020).  
Exposure time: 90s.