

[KO Validated] TTC11/FIS1 Rabbit mAb

Catalog No.: A19666

KO Validated

Recombinant

23 Publications

Basic Information

Observed MW

15 kDa

Calculated MW

17 kDa

Category

Primary antibody

Applications

WB,IP,IF/ICC,IHC-P,ELISA

Cross-Reactivity

Human, Mouse, Rat

CloneNo number

ARC5010-03

Background

Enables identical protein binding activity. Involved in several processes, including calcium-mediated signaling using intracellular calcium source; cellular calcium ion homeostasis; and mitochondrion organization. Acts upstream of or within mitochondrion morphogenesis. Located in mitochondrion and peroxisome. Is integral component of mitochondrial outer membrane and integral component of peroxisomal membrane. Part of protein-containing complex. Biomarker of Alzheimer's disease.

Recommended Dilutions

WB 1:1000 - 1:2000

IP 0.5 µg - 4 µg antibody for
200 µg - 400 µg extracts
of whole cells

IF/ICC 1:100 - 1:400

IHC-P 1:100 - 1:400

ELISA Recommended starting
concentration is 1 µg/mL.
Please optimize the
concentration based on
your specific assay
requirements.

Immunogen Information

Gene ID

51024

Swiss Prot

Q9Y3D6

Immunogen

Recombinant protein (or fragment). This information is considered to be commercially sensitive.

Synonyms

TTC11; CGI-135; S1

Product Information

Source

Rabbit

Isotype

IgG

Purification

Affinity purification

Storage

Store at -20°C. Avoid freeze / thaw cycles.

Buffer: PBS containing 50% glycerol and 0.05% BSA, preserved with proclin300 or sodium azide (as specified on the Certificate of Analysis), pH 7.3.

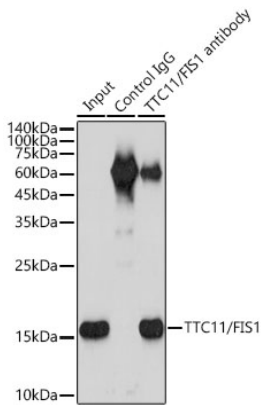
Contact

☎ | 400-999-6126

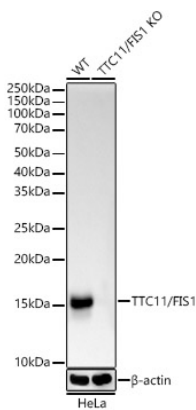
✉ | cn.market@abclonal.com.cn

🌐 | www.abclonal.com.cn

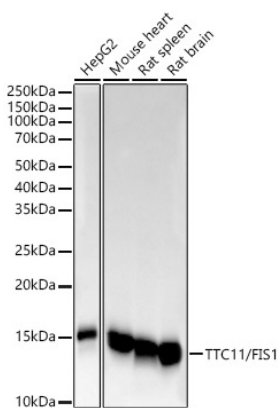
Validation Data



Immunoprecipitation of TTC11/FIS1 from 300 µg extracts of HeLa cells was performed using 3 µg of [KO Validated] TTC11/FIS1 Rabbit mAb (A19666). Rabbit IgG isotype control (AC042) was used to precipitate the Control IgG sample. IP samples were eluted with 1x reducing Laemmli Buffer. The Input lane represents 10% of the total input. Western blot analysis of immunoprecipitates was conducted using [KO Validated] TTC11/FIS1 Rabbit mAb (A19666) at a dilution of 1:2000.

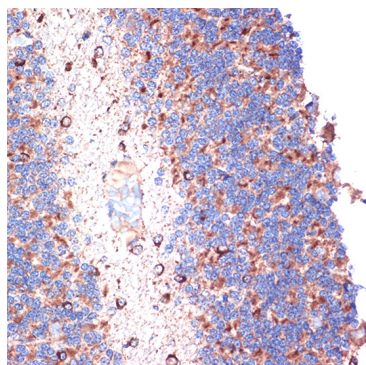


Western blot analysis of lysates from wild type (WT) and TTC11/FIS1 knockout (KO) HeLa(KO) cells, using [KO Validated] TTC11/FIS1 Rabbit mAb (A19666) at 1:1000 dilution incubated overnight at 4°C. Secondary antibody: HRP-conjugated Goat anti-Rabbit IgG (H+L) (AS014) at 1:10000 dilution. Lysates/proteins: 25µg per lane. Blocking buffer: 3% nonfat dry milk in TBST. Detection: ECL Basic Kit (RM00020). Exposure time: 10s.

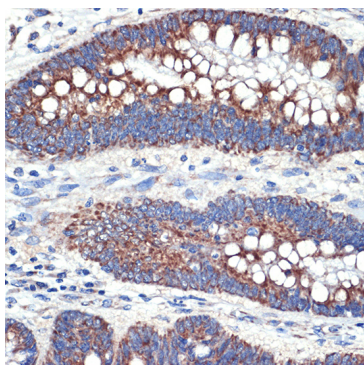


Western blot analysis of various lysates, using [KO Validated] TTC11/FIS1 Rabbit mAb (A19666) at 1:1000 dilution incubated overnight at 4°C. Secondary antibody: HRP-conjugated Goat anti-Rabbit IgG (H+L) (AS014) at 1:10000 dilution. Lysates/proteins: 25µg per lane. Blocking buffer: 3% nonfat dry milk in TBST. Detection: ECL Basic Kit (RM00020). Exposure time: 10s.

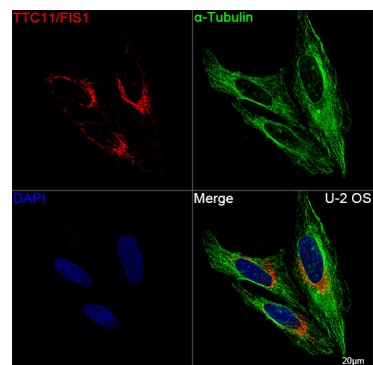
Validation Data



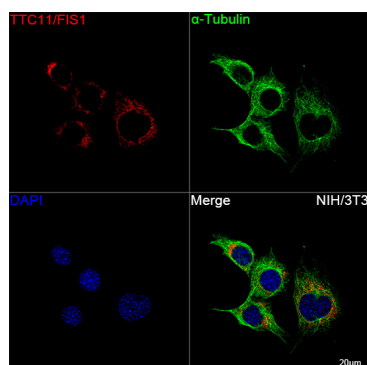
Immunohistochemistry analysis of paraffin-embedded Rat brain tissue using [KO Validated] TTC11/FIS1 Rabbit mAb (A19666) at a dilution of 1:100 (40x lens). Microwave antigen retrieval performed with 0.01M Tris-EDTA Buffer (pH 9.0) prior to IHC staining.



Immunohistochemistry analysis of paraffin-embedded Human colon carcinoma tissue using [KO Validated] TTC11/FIS1 Rabbit mAb (A19666) at a dilution of 1:100 (40x lens). Microwave antigen retrieval performed with 0.01M Tris-EDTA Buffer (pH 9.0) prior to IHC staining.



Confocal imaging of U-2 OS cells using [KO Validated] TTC11/FIS1 Rabbit mAb (A19666, dilution 1:200) followed by a further incubation with Cy3-conjugated Goat anti-Rabbit IgG (H+L) (AS007, dilution 1:500) (Red). The cells were counterstained with α -Tubulin Mouse mAb (AC012, dilution 1:400) followed by incubation with ABflo® 488-conjugated Goat Anti-Mouse IgG (H+L) Ab (AS076, dilution 1:500) (Green). DAPI was used for nuclear staining (Blue). Objective: 100x.



Confocal imaging of NIH/3T3 cells using [KO Validated] TTC11/FIS1 Rabbit mAb (A19666, dilution 1:200) followed by a further incubation with Cy3-conjugated Goat anti-Rabbit IgG (H+L) (AS007, dilution 1:500) (Red). The cells were counterstained with α -Tubulin Mouse mAb (AC012, dilution 1:400) followed by incubation with ABflo® 488-conjugated Goat Anti-Mouse IgG (H+L) Ab (AS076, dilution 1:500) (Green). DAPI was used for nuclear staining (Blue). Objective: 100x.