

[KO Validated] HuR/ELAVL1 Rabbit mAb

Catalog No.: A19622

KO Validated

Recombinant

12 Publications

Basic Information

Observed MW

30kDa

Calculated MW

36kDa

Category

Primary antibody

Applications

WB, IHC-P, IF/ICC, IP, ELISA

Cross-Reactivity

Human, Mouse, Rat

CloneNo number

ARC0101

Background

The protein encoded by this gene is a member of the ELAVL family of RNA-binding proteins that contain several RNA recognition motifs, and selectively bind AU-rich elements (AREs) found in the 3' untranslated regions of mRNAs. AREs signal degradation of mRNAs as a means to regulate gene expression, thus by binding AREs, the ELAVL family of proteins play a role in stabilizing ARE-containing mRNAs. This gene has been implicated in a variety of biological processes and has been linked to a number of diseases, including cancer. It is highly expressed in many cancers, and could be potentially useful in cancer diagnosis, prognosis, and therapy.

Recommended Dilutions

WB 1:1000 - 1:6000**IHC-P** 1:200 - 1:2000**IF/ICC** 1:100 - 1:1000**IP** 0.5µg-4µg antibody for
200µg-400µg extracts of
whole cells**ELISA** Recommended starting
concentration is 1 µg/mL.
Please optimize the
concentration based on
your specific assay
requirements.

Immunogen Information

Gene ID

1994

Swiss Prot

Q15717

Immunogen

Synthetic peptide. This information is considered to be commercially sensitive.

Synonyms

HUR; Hua; MeIG; ELAV1; L1

Product Information

Source

Rabbit

Isotype

IgG

Purification

Affinity purification

Storage

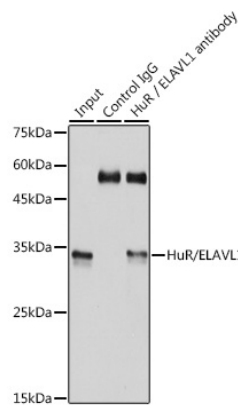
Store at -20°C. Avoid freeze / thaw cycles.

Buffer: PBS containing 50% glycerol and 0.05% BSA, preserved with proclin300 or sodium azide (as specified on the Certificate of Analysis), pH 7.3.

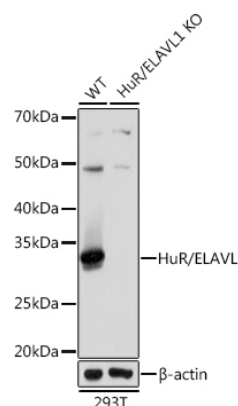
Contact

 | 400-999-6126 | cn.market@abclonal.com.cn | www.abclonal.com.cn

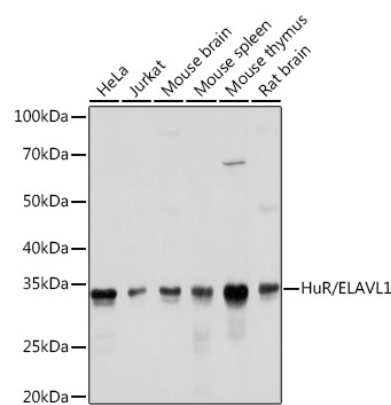
Validation Data



Immunoprecipitation analysis of 300 µg extracts of 293T cells using 3 µg HuR/ELAVL1 antibody (A19622). Western blot was performed from the immunoprecipitate using HuR/ELAVL1 antibody (A19622) at a dilution of 1:1000.

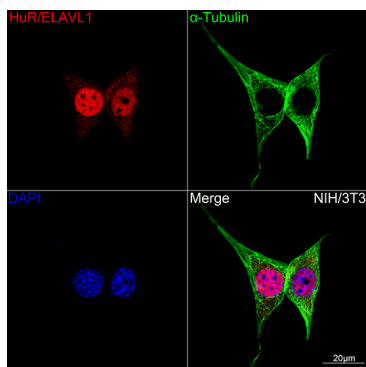


Western blot analysis of lysates from wild type (WT) and HuR/ELAVL1 knockout (KO) 293T cells, using [KO Validated] HuR/ELAVL1 Rabbit mAb (A19622) at 1:1000 dilution. Secondary antibody: HRP-conjugated Goat anti-Rabbit IgG (H+L) (AS014) at 1:10000 dilution. Lysates/proteins: 25µg per lane. Blocking buffer: 3% nonfat dry milk in TBST. Detection: ECL Basic Kit (RM00020). Exposure time: 1s.

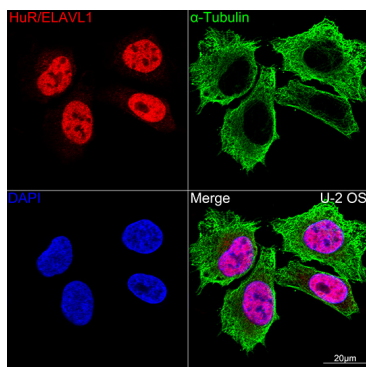


Western blot analysis of various lysates using [KO Validated] HuR/ELAVL1 Rabbit mAb (A19622) at 1:1000 dilution. Secondary antibody: HRP-conjugated Goat anti-Rabbit IgG (H+L) (AS014) at 1:10000 dilution. Lysates/proteins: 25µg per lane. Blocking buffer: 3% nonfat dry milk in TBST. Detection: ECL Basic Kit (RM00020). Exposure time: 1s.

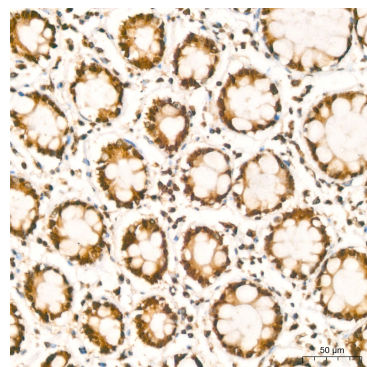
Validation Data



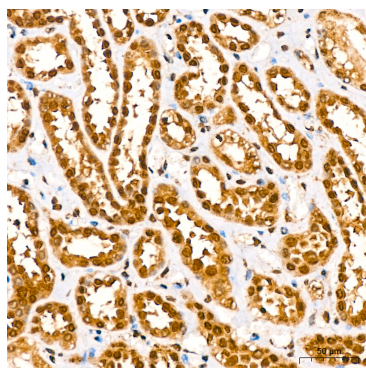
Confocal imaging of NIH/3T3 cells using [KO Validated] HuR/ELAVL1 Rabbit mAb (A19622,dilution 1:100)(Red). The cells were counterstained with α-Tubulin Mouse mAb (AC012,dilution 1:400) (Green). DAPI was used for nuclear staining (blue). Objective: 100x.



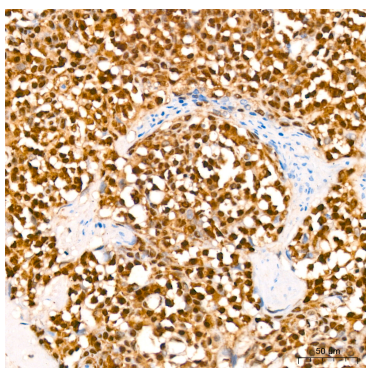
Confocal imaging of U-2 OS cells using [KO Validated] HuR/ELAVL1 Rabbit mAb (A19622,dilution 1:100)(Red). The cells were counterstained with α-Tubulin Mouse mAb (AC012,dilution 1:400) (Green). DAPI was used for nuclear staining (blue). Objective: 100x.



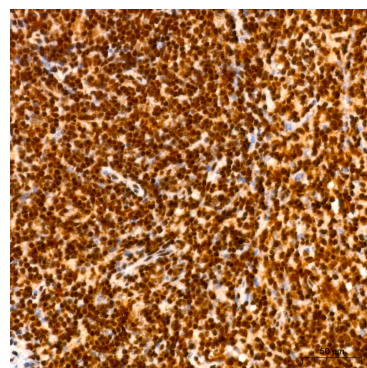
Immunohistochemistry analysis of paraffin-embedded Human colon carcinoma using [KO Validated] HuR/ELAVL1 Rabbit mAb (A19622) at dilution of 1:200 (40x lens). High pressure antigen retrieval performed with 0.01M Citrate buffer (pH 6.0) prior to IHC staining.



Immunohistochemistry analysis of paraffin-embedded Human kidney using [KO Validated] HuR/ELAVL1 Rabbit mAb (A19622) at dilution of 1:200 (40x lens). High pressure antigen retrieval performed with 0.01M Citrate buffer (pH 6.0) prior to IHC staining.



Immunohistochemistry analysis of paraffin-embedded Human tonsil using [KO Validated] HuR/ELAVL1 Rabbit mAb (A19622) at dilution of 1:200 (40x lens). High pressure antigen retrieval performed with 0.01M Citrate buffer (pH 6.0) prior to IHC staining.



Immunohistochemistry analysis of paraffin-embedded Mouse spleen using [KO Validated] HuR/ELAVL1 Rabbit mAb (A19622) at dilution of 1:200 (40x lens). High pressure antigen retrieval performed with 0.01M Citrate buffer (pH 6.0) prior to IHC staining.