

# [KD Validated] ATG7 Rabbit mAb

Catalog No.: A19604 **Recombinant** **11 Publications**

## Basic Information

### Observed MW

78kDa/78kd

### Calculated MW

78kDa

### Category

Primary antibody

### Applications

WB,IHC-P,IP,ELISA

### Cross-Reactivity

Human, Mouse, Rat

### CloneNo number

ARC0083

## Background

This gene encodes an E1-like activating enzyme that is essential for autophagy and cytoplasmic to vacuole transport. The encoded protein is also thought to modulate p53-dependent cell cycle pathways during prolonged metabolic stress. It has been associated with multiple functions, including axon membrane trafficking, axonal homeostasis, mitophagy, adipose differentiation, and hematopoietic stem cell maintenance. Alternative splicing results in multiple transcript variants.

## Recommended Dilutions

**WB** 1:1000 - 1:6000**IHC-P** 1:200 - 1:800**IP** 0.5µg-4µg antibody for  
200µg-400µg extracts of  
whole cells**ELISA** Recommended starting  
concentration is 1 µg/mL.  
Please optimize the  
concentration based on  
your specific assay  
requirements.

## Contact

 | 400-999-6126 | [cn.market@abclonal.com.cn](mailto:cn.market@abclonal.com.cn) | [www.abclonal.com.cn](http://www.abclonal.com.cn)

## Immunogen Information

### Gene ID

10533

### Swiss Prot

O95352

### Immunogen

Synthetic peptide. This information is considered to be commercially sensitive.

### Synonyms

GSA7; [KD Validated] ATG7

## Product Information

### Source

Rabbit

### Isotype

IgG

### Purification

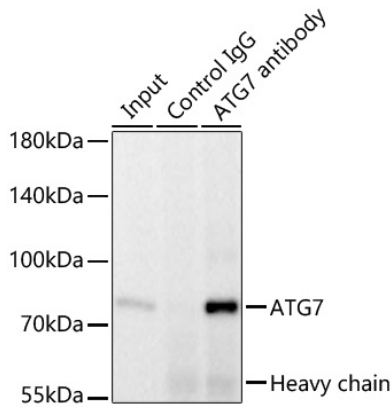
Affinity purification

### Storage

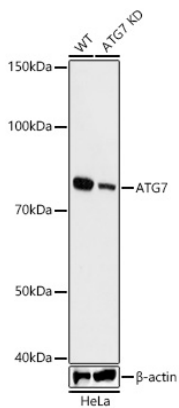
Store at -20°C. Avoid freeze / thaw cycles.

Buffer: PBS with 0.02% sodium azide,0.05% BSA,50% glycerol,pH7.3.

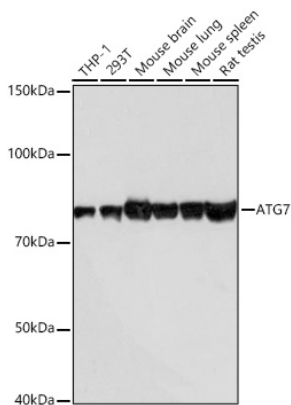
## Validation Data



Immunoprecipitation of ATG7 from 300  $\mu$ g extracts of HeLa cells was performed using 2  $\mu$ g of [KD Validated] ATG7 Rabbit mAb (A19604). Rabbit IgG isotype control (AC005) was used to precipitate the Control IgG sample. IP samples were eluted with 1X reducing Laemmli Buffer. The Input lane represents 10% of the total input. Western blot analysis of immunoprecipitates was conducted using [KD Validated] ATG7 Rabbit mAb (A19604) at a dilution of 1:1000.



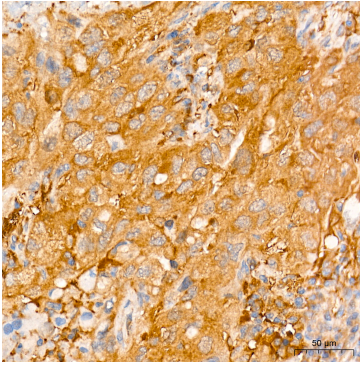
Western blot analysis of lysates from wild type (WT) and ATG7 knockdown (KD) HeLa cells using [KD Validated] ATG7 Rabbit mAb (A19604) at 1:1000 dilution incubated overnight at 4°C. Secondary antibody: HRP-conjugated Goat anti-Rabbit IgG (H+L) (AS014) at 1:10000 dilution. Lysates/proteins: 25  $\mu$ g per lane. Blocking buffer: 3% nonfat dry milk in TBST. Detection: ECL Basic Kit (RM00020). Exposure time: 60s.



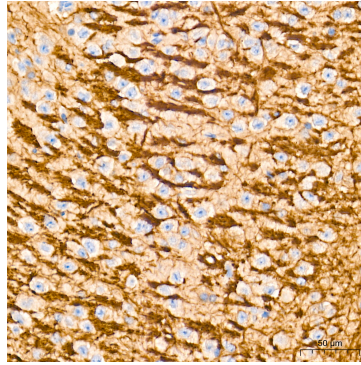
Western blot analysis of various lysates using [KD Validated] ATG7 Rabbit mAb (A19604) at 1:1000 dilution incubated overnight at 4°C. Secondary antibody: HRP-conjugated Goat anti-Rabbit IgG (H+L) (AS014) at 1:10000 dilution. Lysates/proteins: 25  $\mu$ g per lane. Blocking buffer: 3% nonfat dry milk in TBST. Detection: ECL Basic Kit (RM00020). Exposure time: 10s.

## Validation Data

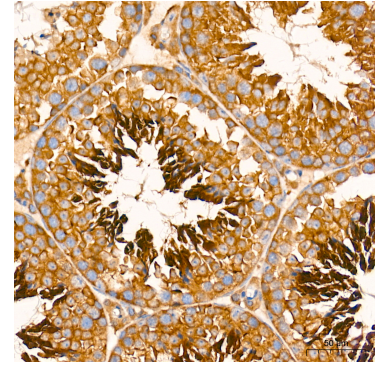
---



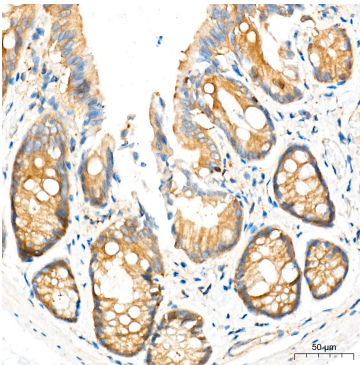
Immunohistochemistry analysis of paraffin-embedded Human lung cancer tissue using [KD Validated] ATG7 Rabbit mAb (A19604) at a dilution of 1:500 (40x lens). High pressure antigen retrieval performed with 0.01M Tris-EDTA Buffer (pH 9.0) prior to IHC staining.



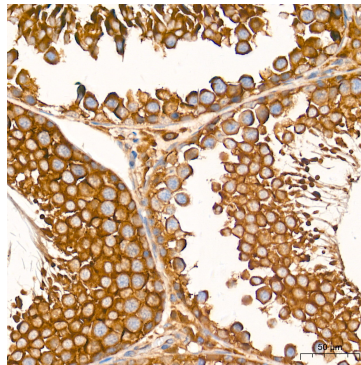
Immunohistochemistry analysis of paraffin-embedded Mouse brain tissue using [KD Validated] ATG7 Rabbit mAb (A19604) at a dilution of 1:500 (40x lens). High pressure antigen retrieval performed with 0.01M Tris-EDTA Buffer (pH 9.0) prior to IHC staining.



Immunohistochemistry analysis of paraffin-embedded Mouse testis tissue using [KD Validated] ATG7 Rabbit mAb (A19604) at a dilution of 1:500 (40x lens). High pressure antigen retrieval performed with 0.01M Tris-EDTA Buffer (pH 9.0) prior to IHC staining.



Immunohistochemistry analysis of paraffin-embedded Rat colon tissue using [KD Validated] ATG7 Rabbit mAb (A19604) at a dilution of 1:500 (40x lens). High pressure antigen retrieval performed with 0.01M Tris-EDTA Buffer (pH 9.0) prior to IHC staining.



Immunohistochemistry analysis of paraffin-embedded Rat testis tissue using [KD Validated] ATG7 Rabbit mAb (A19604) at a dilution of 1:500 (40x lens). High pressure antigen retrieval performed with 0.01M Tris-EDTA Buffer (pH 9.0) prior to IHC staining.