

MAD2L1BP Rabbit mAb

Catalog No.: A19600 **Recombinant**

Basic Information

Observed MW

Refer to figures

Calculated MW

31kDa

Category

Primary antibody

Applications

IHC-P,IF/ICC,ELISA

Cross-Reactivity

Human, Mouse

CloneNo number

ARC2187

Background

The protein encoded by this gene was identified as a binding protein of the MAD2 mitotic arrest deficient-like 1 (MAD2/MAD2L1). MAD2 is a key component of the spindle checkpoint that delays the onset of anaphase until all the kinetochores are attached to the spindle. This protein may interact with the spindle checkpoint and coordinate cell cycle events in late mitosis. Alternatively spliced transcript variants encoding distinct isoforms have been observed.

Recommended Dilutions

IHC-P 1:50 - 1:200

IF/ICC 1:100 - 1:400

ELISA Recommended starting concentration is 1 µg/mL. Please optimize the concentration based on your specific assay requirements.

Immunogen Information

Gene ID

9587

Swiss Prot

Q15013

Immunogen

A synthetic peptide corresponding to a sequence within amino acids 175-274 of human MAD2L1BP (Q15013).

Synonyms

CMT2; MAD2L1BP

Contact

☎ | 400-999-6126

✉ | cn.market@abclonal.com.cn

🌐 | www.abclonal.com.cn

Product Information

Source

Rabbit

Isotype

IgG

Purification

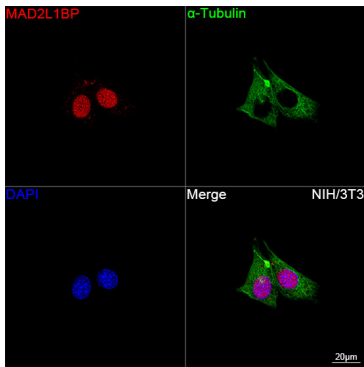
Affinity purification

Storage

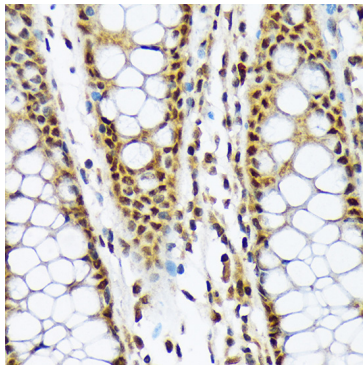
Store at -20°C. Avoid freeze / thaw cycles.

Buffer: PBS containing 50% glycerol and 0.05% BSA, preserved with proclin300 or sodium azide (as specified on the Certificate of Analysis), pH 7.3.

Validation Data



Confocal imaging of NIH/3T3 cells using MAD2L1BP Rabbit mAb (A19600, dilution 1:100) followed by a further incubation with Cy3 Goat Anti-Rabbit IgG (H+L) (AS007, dilution 1:500) (Red). The cells were counterstained with α -Tubulin Mouse mAb (AC012, dilution 1:400) followed by incubation with ABflo® 488-conjugated Goat Anti-Mouse IgG (H+L) Ab (AS076, dilution 1:500) (Green). DAPI was used for nuclear staining (Blue). Objective: 100x.



Immunohistochemistry analysis of paraffin-embedded Human colon using MAD2L1BP Rabbit mAb (A19600) at dilution of 1:100 (40x lens). Microwave antigen retrieval performed with 0.01M Tris/EDTA Buffer (pH 9.0) prior to IHC staining.