

# [KD Validated] RIPK1/RIP Rabbit mAb

Catalog No.: A19580

Recombinant

11 Publications

## Basic Information

### Observed MW

76kDa

### Calculated MW

76kDa

### Category

Primary antibody

### Applications

WB, IP, ELISA

### Cross-Reactivity

Human

### CloneNo number

ARC0059

## Background

This gene encodes a member of the receptor-interacting protein (RIP) family of serine/threonine protein kinases. The encoded protein plays a role in inflammation and cell death in response to tissue damage, pathogen recognition, and as part of developmental regulation. RIPK1/RIPK3 kinase-mediated necrosis is referred to as necroptosis. Genetic disruption of this gene in mice results in death shortly after birth.

## Recommended Dilutions

**WB** 1:1000 - 1:2000

**IP** 0.5µg-4µg antibody for  
200µg-400µg extracts of  
whole cells

**ELISA** Recommended starting  
concentration is 1 µg/mL.  
Please optimize the  
concentration based on  
your specific assay  
requirements.

## Immunogen Information

### Gene ID

8737

### Swiss Prot

Q13546

### Immunogen

Recombinant protein (or fragment). This information is considered to be commercially sensitive.

### Synonyms

RIP; RIP1; AIEFL; IMD57; RIP-1; RIPK1/RIP

## Contact

☎ | 400-999-6126

✉ | [cn.market@abclonal.com.cn](mailto:cn.market@abclonal.com.cn)

🌐 | [www.abclonal.com.cn](http://www.abclonal.com.cn)

## Product Information

### Source

Rabbit

### Isotype

IgG

### Purification

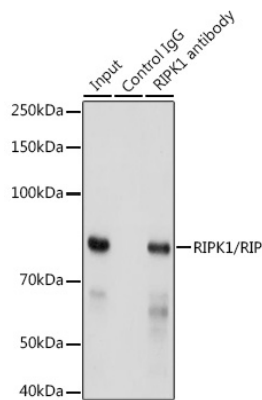
Affinity purification

### Storage

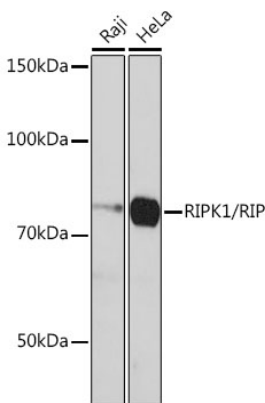
Store at -20°C. Avoid freeze / thaw cycles.

Buffer: PBS containing 50% glycerol and 0.05% BSA, preserved with proclin300 or sodium azide (as specified on the Certificate of Analysis), pH 7.3.

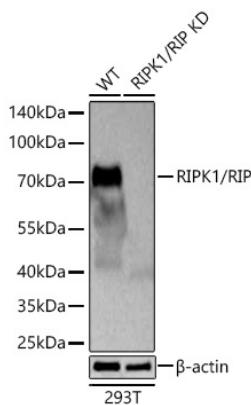
Validation Data



Immunoprecipitation of RIPK1/RIP from 300 µg extracts of HeLa cells was performed using 3 µg of [KD Validated] RIPK1/RIP Rabbit mAb (A19580). Rabbit IgG isotype control (AC042) was used to precipitate the Control IgG sample. IP samples were eluted with 1x reducing Laemmli Buffer. The Input lane represents 10% of the total input. Western blot analysis of immunoprecipitates was conducted using [KD Validated] RIPK1/RIP Rabbit mAb (A19580) at a dilution of 1:500.



Western blot analysis of various lysates using [KD Validated] RIPK1/RIP Rabbit mAb (A19580) at 1:1000 dilution incubated overnight at 4°C.  
Secondary antibody: HRP-conjugated Goat anti-Rabbit IgG (H+L) (AS014) at 1:10000 dilution.  
Lysates/proteins: 25µg per lane.  
Blocking buffer: 3% nonfat dry milk in TBST.  
Detection: ECL Basic Kit (RM00020).  
Exposure time: 3min.



Western blot analysis of lysates from wild type (WT) and RIPK1/RIP knockdown (KD) 293T cells using [KD Validated] RIPK1/RIP Rabbit mAb (A19580) at 1:1000 dilution incubated at room temperature for 1.5 hours.  
Secondary antibody: HRP-conjugated Goat anti-Rabbit IgG (H+L) (AS014) at 1:10000 dilution.  
Lysates/proteins: 25 µg per lane.  
Blocking buffer: 3% nonfat dry milk in TBST.  
Detection: ECL Basic Kit (RM00020).  
Exposure time: 45s.