

[KO Validated] STAT5B Rabbit mAb

Catalog No.: A19567

KO Validated

Recombinant

2 Publications

Basic Information

Observed MW

90 kDa

Calculated MW

90 kDa

Category

Primary antibody

Applications

WB,IP,ELISA

Cross-Reactivity

Human, Mouse, Rat

CloneNo number

ARC0046

Background

The protein encoded by this gene is a member of the STAT family of transcription factors. In response to cytokines and growth factors, STAT family members are phosphorylated by the receptor associated kinases, and then form homo- or heterodimers that translocate to the cell nucleus where they act as transcription activators. This protein mediates the signal transduction triggered by various cell ligands, such as IL2, IL4, CSF1, and different growth hormones. It has been shown to be involved in diverse biological processes, such as TCR signaling, apoptosis, adult mammary gland development, and sexual dimorphism of liver gene expression. This gene was found to fuse to retinoic acid receptor-alpha (RARA) gene in a small subset of acute promyelocytic leukemias (APLL). The dysregulation of the signaling pathways mediated by this protein may be the cause of the APLL.

Recommended Dilutions

WB 1:1000 - 1:4000**IP** 0.5µg-4µg antibody for
200µg-400µg extracts of
whole cells**ELISA** Recommended starting
concentration is 1 µg/mL.
Please optimize the
concentration based on
your specific assay
requirements.

Immunogen Information

Gene ID

6777

Swiss Prot

P51692

Immunogen

Recombinant protein (or fragment). This information is considered to be commercially sensitive.

Synonyms

STAT5; GHISID2; 5B

Contact

 | 400-999-6126 | cn.market@abclonal.com.cn | www.abclonal.com.cn

Product Information

Source

Rabbit

Isotype

IgG

Purification

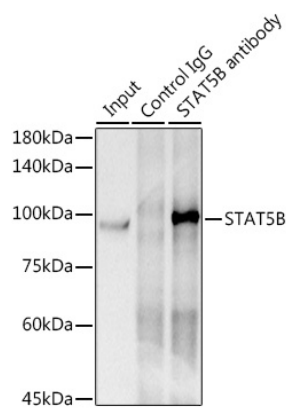
Affinity purification

Storage

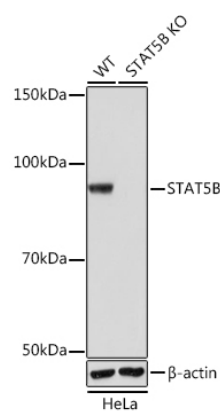
Store at -20°C. Avoid freeze / thaw cycles.

Buffer: PBS with 0.02% sodium azide, 0.05% BSA, 50% glycerol, pH7.3.

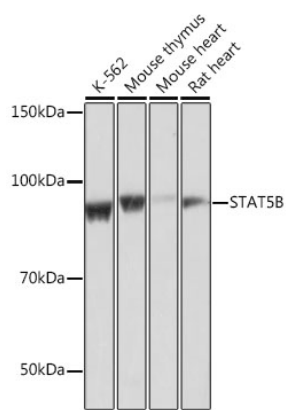
Validation Data



Immunoprecipitation analysis of 300 µg extracts of HeLa cells using 3 µg [KO Validated] STAT5B Rabbit mAb (A19567). Western blot was performed from the immunoprecipitate using [KO Validated] STAT5B Rabbit mAb (A19567) at a dilution of 1:1000.



Western blot analysis of lysates from wild type (WT) and STAT5B knockout (KO) HeLa cells, using [KO Validated] STAT5B Rabbit mAb (A19567) at 1:1000 dilution.
Secondary antibody: HRP-conjugated Goat anti-Rabbit IgG (H+L) (AS014) at 1:10000 dilution.
Lysates/proteins: 25µg per lane.
Blocking buffer: 3% nonfat dry milk in TBST.
Detection: ECL Basic Kit (RM00020).
Exposure time: 1s.



Western blot analysis of various lysates using [KO Validated] STAT5B Rabbit mAb (A19567) at 1:1000 dilution.
Secondary antibody: HRP-conjugated Goat anti-Rabbit IgG (H+L) (AS014) at 1:10000 dilution.
Lysates/proteins: 25µg per lane.
Blocking buffer: 3% nonfat dry milk in TBST.
Detection: ECL Basic Kit (RM00020).
Exposure time: 1s.