

# MEK1 Rabbit mAb

Catalog No.: A19565

Recombinant

2 Publications

## Basic Information

**Observed MW**

45kDa

**Calculated MW**

43kDa

**Category**

Primary antibody

**Applications**

WB, IF/ICC, IP, ELISA

**Cross-Reactivity**

Human, Mouse, Rat

**CloneNo number**

ARC0044

## Background

The protein encoded by this gene is a member of the dual specificity protein kinase family, which acts as a mitogen-activated protein (MAP) kinase kinase. MAP kinases, also known as extracellular signal-regulated kinases (ERKs), act as an integration point for multiple biochemical signals. This protein kinase lies upstream of MAP kinases and stimulates the enzymatic activity of MAP kinases upon wide variety of extra- and intracellular signals. As an essential component of MAP kinase signal transduction pathway, this kinase is involved in many cellular processes such as proliferation, differentiation, transcription regulation and development.

## Recommended Dilutions

**WB** 1:500 - 1:2000**IF/ICC** 1:50 - 1:200**IP** 0.5µg-4µg antibody for  
400µg-600µg extracts of  
whole cells**ELISA** Recommended starting  
concentration is 1 µg/mL.  
Please optimize the  
concentration based on  
your specific assay  
requirements.

## Immunogen Information

**Gene ID**

5604

**Swiss Prot**

Q02750

**Immunogen**

Synthetic peptide. This information is considered to be commercially sensitive.

**Synonyms**

MEL; CFC3; MEK1; MKK1; MAPKK1; PRKMK1

## Contact

 | 400-999-6126 | [cn.market@abclonal.com.cn](mailto:cn.market@abclonal.com.cn) | [www.abclonal.com.cn](http://www.abclonal.com.cn)

## Product Information

**Source**

Rabbit

**Isotype**

IgG

**Purification**

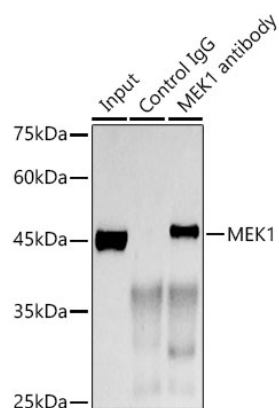
Affinity purification

**Storage**

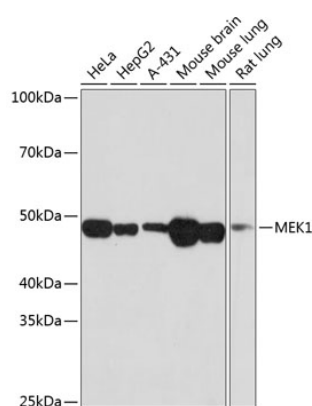
Store at -20°C. Avoid freeze / thaw cycles.

Buffer: PBS with 0.02% sodium azide, 0.05% BSA, 50% glycerol, pH7.3.

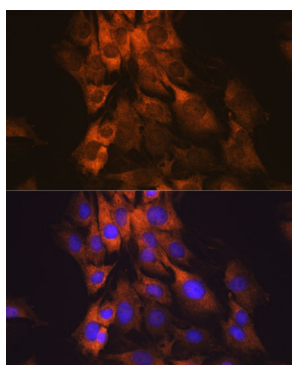
## Validation Data



Immunoprecipitation analysis of 600 µg extracts of Mouse brain using 3 µg MEK1 antibody (A19565). Western blot was performed from the immunoprecipitate using MEK1 (A19565) at a dilution of 1:1000.



Western blot analysis of various lysates using MEK1 Rabbit mAb (A19565) at 1:1000 dilution. Secondary antibody: HRP-conjugated Goat anti-Rabbit IgG (H+L) (AS014) at 1:10000 dilution. Lysates/proteins: 25µg per lane. Blocking buffer: 3% nonfat dry milk in TBST. Detection: ECL Basic Kit (RM00020). Exposure time: 1min.



Immunofluorescence analysis of C6 cells using MEK1 Rabbit mAb (A19565). Secondary antibody: Cy3-conjugated Goat anti-Rabbit IgG (H+L) (AS007) at 1:500 dilution. Blue: DAPI for nuclear staining.