

# STAT1 Rabbit mAb

Catalog No.: A19563

Recombinant

17 Publications

## Basic Information

**Observed MW**

84kDa/91kDa

**Calculated MW**

87kDa

**Category**

Primary antibody

**Applications**

WB,IP,ELISA

**Cross-Reactivity**

Human, Mouse, Rat

**CloneNo number**

ARC0042

## Background

The protein encoded by this gene is a member of the STAT protein family. In response to cytokines and growth factors, STAT family members are phosphorylated by the receptor associated kinases, and then form homo- or heterodimers that translocate to the cell nucleus where they act as transcription activators. The protein encoded by this gene can be activated by various ligands including interferon-alpha, interferon-gamma, EGF, PDGF and IL6. This protein mediates the expression of a variety of genes, which is thought to be important for cell viability in response to different cell stimuli and pathogens. The protein plays an important role in immune responses to viral, fungal and mycobacterial pathogens. Mutations in this gene are associated with Immunodeficiency 31B, 31A, and 31C.

## Recommended Dilutions

**WB** 1:10000 - 1:40000**IP** 0.5µg-4µg antibody for  
200µg-600µg extracts of  
whole cells**ELISA** Recommended starting  
concentration is 1 µg/mL.  
Please optimize the  
concentration based on  
your specific assay  
requirements.

## Immunogen Information

**Gene ID**

6772

**Swiss Prot**

P42224

**Immunogen**

Synthetic peptide. This information is considered to be commercially sensitive.

**Synonyms**

CANDF7; IMD31A; IMD31B; IMD31C; ISGF-3; STAT91; STAT1

## Contact

 | 400-999-6126 | [cn.market@abclonal.com.cn](mailto:cn.market@abclonal.com.cn) | [www.abclonal.com.cn](http://www.abclonal.com.cn)

## Product Information

**Source**

Rabbit

**Isotype**

IgG

**Purification**

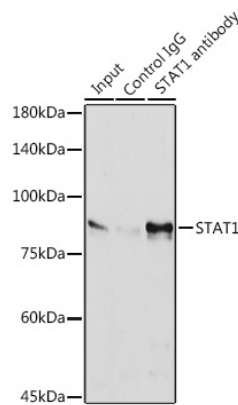
Affinity purification

**Storage**

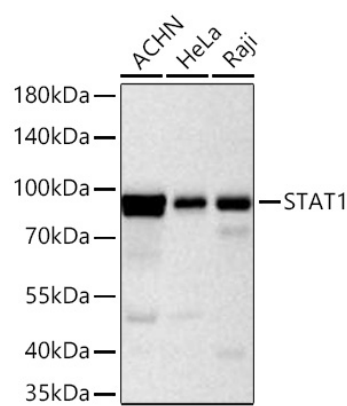
Store at -20°C. Avoid freeze / thaw cycles.

Buffer: PBS with 0.02% sodium azide, 0.05% BSA, 50% glycerol, pH7.3.

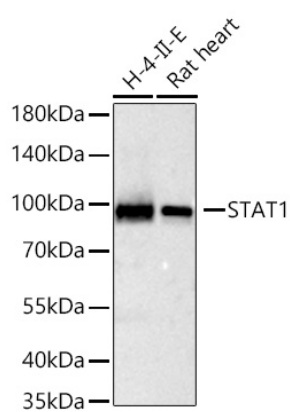
Validation Data



Immunoprecipitation analysis of 600 µg extracts of HeLa cells using 3 µg STAT1 antibody (A19563). Western blot was performed from the immunoprecipitate using STAT1 antibody (A19563) at a dilution of 1:1000.



Western blot analysis of various lysates using STAT1 Rabbit mAb (A19563) at 1:20000 dilution incubated at room temperature for 1.5 hours. Secondary antibody: HRP-conjugated Goat anti-Rabbit IgG (H+L) (AS014) at 1:10000 dilution. Lysates/proteins: 25 µg per lane. Blocking buffer: 3% nonfat dry milk in TBST. Detection: ECL Basic Kit (RM00020). Exposure time: 20s.



Western blot analysis of various lysates using STAT1 Rabbit mAb (A19563) at 1:20000 dilution incubated at room temperature for 1.5 hours. Secondary antibody: HRP-conjugated Goat anti-Rabbit IgG (H+L) (AS014) at 1:10000 dilution. Lysates/proteins: 25 µg per lane. Blocking buffer: 3% nonfat dry milk in TBST. Detection: ECL Basic Kit (RM00020). Exposure time: 60s.