

# TSC2 Rabbit mAb

Catalog No.: A19540 **Recombinant**

## Basic Information

### Observed MW

200kDa

### Calculated MW

201kDa

### Category

Primary antibody

### Applications

WB,IP,ELISA

### Cross-Reactivity

Human

### CloneNo number

ARC0019

## Background

This gene is a tumor suppressor gene that encodes the growth inhibitory protein tuberin. Tuberin interacts with hamartin to form the TSC protein complex which functions in the control of cell growth. This TSC protein complex negatively regulates mammalian target of rapamycin complex 1 (mTORC1) signaling which is a major regulator of anabolic cell growth. Mutations in this gene have been associated with tuberous sclerosis and lymphangioleiomyomatosis.

## Recommended Dilutions

**WB** 1:500 - 1:1000

**IP** 0.5µg-4µg antibody for  
200µg-400µg extracts of  
whole cells

**ELISA** Recommended starting  
concentration is 1 µg/mL.  
Please optimize the  
concentration based on  
your specific assay  
requirements.

## Immunogen Information

### Gene ID

7249

### Swiss Prot

P49815

### Immunogen

Synthetic peptide. This information is considered to be commercially sensitive.

### Synonyms

LAM; TSC4; PPP1R160; TSC2

## Contact

☎ | 400-999-6126

✉ | [cn.market@abclonal.com.cn](mailto:cn.market@abclonal.com.cn)

🌐 | [www.abclonal.com.cn](http://www.abclonal.com.cn)

## Product Information

### Source

Rabbit

### Isotype

IgG

### Purification

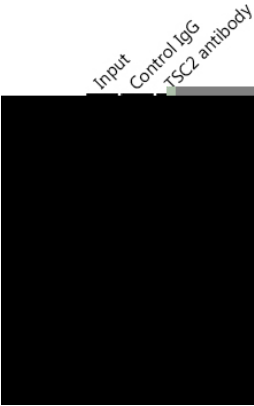
Affinity purification

### Storage

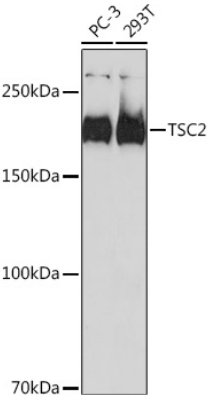
Store at -20°C. Avoid freeze / thaw cycles.

Buffer: PBS with 0.02% sodium azide, 0.05% BSA, 50% glycerol, pH7.3.

# Validation Data



Immunoprecipitation analysis of 300 µg extracts of 293T cells using 3 µg TSC2 antibody (A19540). Western blot was performed from the immunoprecipitate using TSC2 antibody (A19540) at a dilution of 1:1000.



Western blot analysis of various lysates using TSC2 Rabbit mAb (A19540) at 1:1000 dilution. Secondary antibody: HRP-conjugated Goat anti-Rabbit IgG (H+L) (AS014) at 1:10000 dilution. Lysates/proteins: 25µg per lane. Blocking buffer: 3% nonfat dry milk in TBST. Detection: ECL Basic Kit (RM00020). Exposure time: 90s.