

# NAL1 Rabbit pAb

**Catalog No.: A19528**

## Basic Information

### Observed MW

55kDa

### Calculated MW

63kDa

### Category

Primary antibody

### Applications

WB, ELISA

### Cross-Reactivity

Oryza sativa

## Background

Involved in the regulation of lateral leaf growth. May be involved in the regulation of basipetal polar auxin transport (PAT) and vascular patterning in leaves. Controls photosynthesis rate by regulating carboxylation efficiency and consequently photosynthesis rate. Controls panicle and spikelet numbers, and grain yield

## Recommended Dilutions

**WB** 1:500 - 1:2000

**ELISA** Recommended starting concentration is 1 µg/mL. Please optimize the concentration based on your specific assay requirements.

## Immunogen Information

### Gene ID

4336986

### Swiss Prot

B4XT64

### Immunogen

Recombinant protein (or fragment). This information is considered to be commercially sensitive.

### Synonyms

GFP; SPIKE; qFLW4; LSCHL4; Osj\_16147; NAL1

## Contact

 | 400-999-6126

 | [cn.market@abclonal.com.cn](mailto:cn.market@abclonal.com.cn)

 | [www.abclonal.com.cn](http://www.abclonal.com.cn)

## Product Information

### Source

Rabbit

### Isotype

IgG

### Purification

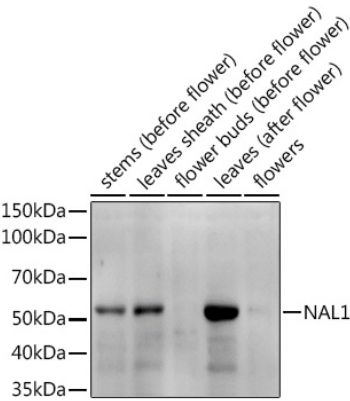
Affinity purification

### Storage

Store at -20°C. Avoid freeze / thaw cycles.

Buffer: PBS with 0.01% thimerosal, 50% glycerol, pH7.3.

Validation Data



Western blot analysis of extracts of various tissues from the japonica rice (*Oryza sativa* L.) variety Zhonghua 11, using NAL1 Rabbit pAb (A19528) at 1:1000 dilution.  
Secondary antibody: HRP-conjugated Goat anti-Rabbit IgG (H+L) (AS014) at 1:10000 dilution.  
Lysates/proteins: 25µg per lane.  
Blocking buffer: 3% nonfat dry milk in TBST.  
Detection: ECL Enhanced Kit (RM00021).  
Exposure time: 60s.