

# NDUFAB1 Rabbit pAb

Catalog No.: A19326

## Basic Information

### Observed MW

Refer to figures

### Calculated MW

17kDa

### Category

Primary antibody

### Applications

ELISA, IF/ICC

### Cross-Reactivity

Mouse

## Background

Predicted to enable acyl binding activity; acyl carrier activity; and fatty acid binding activity. Involved in mitochondrial respiratory chain complex I assembly and protein lipoylation. Located in mitochondrion and nucleoplasm. Part of mitochondrial respiratory chain complex I. Colocalizes with mitochondrial large ribosomal subunit.

## Recommended Dilutions

IF/ICC 1:50 - 1:200

## Immunogen Information

### Gene ID

4706

### Swiss Prot

O14561

### Immunogen

A synthetic peptide corresponding to a sequence within amino acids 50-150 of human NDUFAB1 (NP\_004994.1).

### Synonyms

ACP; ACP1; SDAP; FASN2A; NDUFAB1

## Contact

☎ | 400-999-6126

✉ | [cn.market@abclonal.com.cn](mailto:cn.market@abclonal.com.cn)

🌐 | [www.abclonal.com.cn](http://www.abclonal.com.cn)

## Product Information

### Source

Rabbit

### Isotype

IgG

### Purification

Affinity purification

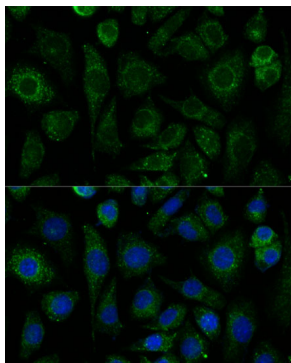
### Storage

Store at -20°C. Avoid freeze / thaw cycles.

Buffer: PBS with 0.01% thimerosal, 50% glycerol, pH7.3.

## Validation Data

---



Immunofluorescence analysis of L929 cells using NDUFAB1 Rabbit pAb (A19326) at dilution of 1:100. Secondary antibody: Cy3 Goat Anti-Rabbit IgG (H+L) (AS007) at 1:500 dilution. Blue: DAPI for nuclear staining.