

# ATP4B Rabbit mAb

Catalog No.: A19280 **Recombinant**

## Basic Information

### Observed MW

Refer to figures

### Calculated MW

33kDa

### Category

Primary antibody

### Applications

IHC-P, ELISA

### Cross-Reactivity

Human, Mouse, Rat

### CloneNo number

ARC2461

## Background

The protein encoded by this gene belongs to a family of P-type cation-transporting ATPases. The gastric H<sup>+</sup>, K<sup>+</sup>-ATPase is a heterodimer consisting of a high molecular weight catalytic alpha subunit and a smaller but heavily glycosylated beta subunit. This enzyme is a proton pump that catalyzes the hydrolysis of ATP coupled with the exchange of H(+) and K(+) ions across the plasma membrane. It is also responsible for gastric acid secretion. This gene encodes the beta subunit of the gastric H<sup>+</sup>, K<sup>+</sup>-ATPase.

## Recommended Dilutions

**IHC-P** 1:50 - 1:200

**ELISA** Recommended starting concentration is 1 µg/mL. Please optimize the concentration based on your specific assay requirements.

## Immunogen Information

### Gene ID

496

### Swiss Prot

P51164

### Immunogen

Synthetic peptide. This information is considered to be commercially sensitive.

### Synonyms

Hydrogen Potassium ATPase Beta; ATP4B

## Contact

☎ | 400-999-6126

✉ | [cn.market@abclonal.com.cn](mailto:cn.market@abclonal.com.cn)

🌐 | [www.abclonal.com.cn](http://www.abclonal.com.cn)

## Product Information

### Source

Rabbit

### Isotype

IgG

### Purification

Affinity purification

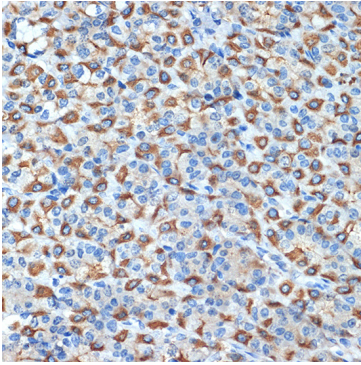
### Storage

Store at -20°C. Avoid freeze / thaw cycles.

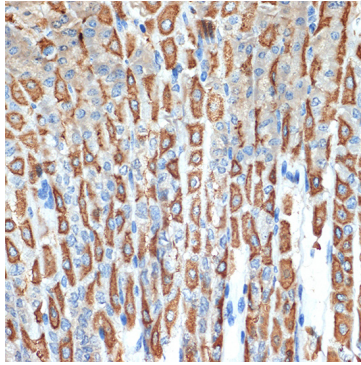
Buffer: PBS containing 50% glycerol and 0.05% BSA, preserved with proclin300 or sodium azide (as specified on the Certificate of Analysis), pH 7.3.

## Validation Data

---



Immunohistochemistry analysis of paraffin-embedded Rat stomach using ATP4B Rabbit mAb (A19280) at dilution of 1:100 (40x lens). Microwave antigen retrieval performed with 0.01M Tris/EDTA Buffer (pH 9.0) prior to IHC staining.



Immunohistochemistry analysis of paraffin-embedded Mouse stomach using ATP4B Rabbit mAb (A19280) at dilution of 1:100 (40x lens). Microwave antigen retrieval performed with 0.01M Tris/EDTA Buffer (pH 9.0) prior to IHC staining.