

LGI1 Rabbit mAb

Catalog No.: A19230 **Recombinant**

Basic Information

Observed MW

64kDa

Calculated MW

64kDa

Category

Primary antibody

Applications

WB, ELISA

Cross-Reactivity

Mouse, Rat

CloneNo number

ARC2388

Background

This gene encodes a member of the secreted leucine-rich repeat (LRR) superfamily and shares homology with members of the SLIT protein family. The encoded protein may regulate the activity of voltage-gated potassium channels and may be involved in neuronal growth regulation and cell survival. This gene is rearranged as a result of translocations in glioblastoma cell lines, and it is frequently down-regulated or rearranged in malignant gliomas. Mutations in this gene result in autosomal dominant lateral temporal epilepsy. Alternative splicing results in multiple transcript variants.

Recommended Dilutions

WB 1:500 - 1:1000

ELISA Recommended starting concentration is 1 µg/mL. Please optimize the concentration based on your specific assay requirements.

Immunogen Information

Gene ID

9211

Swiss Prot

O95970

Immunogen

Synthetic peptide. This information is considered to be commercially sensitive.

Synonyms

EPT; ETL1; ADLTE; ADPAEF; ADPEAF; IB1099; EPITEMPIN; LGI1

Contact

☎ | 400-999-6126

✉ | cn.market@abclonal.com.cn

🌐 | www.abclonal.com.cn

Product Information

Source

Rabbit

Isotype

IgG

Purification

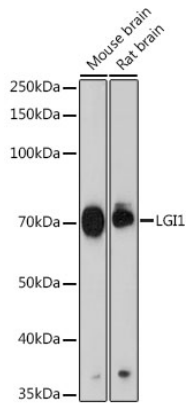
Affinity purification

Storage

Store at -20°C. Avoid freeze / thaw cycles.

Buffer: PBS containing 50% glycerol and 0.05% BSA, preserved with proclin300 or sodium azide (as specified on the Certificate of Analysis), pH 7.3.

Validation Data



Western blot analysis of various lysates using LGI1 Rabbit mAb (A19230) at 1:1000 dilution.
Secondary antibody: HRP-conjugated Goat anti-Rabbit IgG (H+L) (AS014) at 1:10000 dilution.
Lysates/proteins: 25 μ g per lane.
Blocking buffer: 3% nonfat dry milk in TBST.
Detection: ECL Basic Kit (RM00020).
Exposure time: 90s.