

RGA1 Rabbit pAb

Catalog No.: A19214

Basic Information

Observed MW

44.2kDa

Calculated MW

44kDa

Category

Primary antibody

Applications

WB, ELISA

Cross-Reactivity

Oryza sativa

Background

This gene Ubiquitous expression in leaves before flowering (RPKM 48.7), leaves after flowering (RPKM 36.4) and 6 other tissues. It encodes protein Alpha subunit of G proteins (guanine nucleotide binding). G-alpha has three isomers, guanine nucleotide-binding protein alpha-1 subunit isoform X1, guanine nucleotide-binding protein alpha-1 subunit isoform X2 and guanine nucleotide-binding protein alpha-1 subunit isoform X3. RGA1 is one of the regulators in salt response partially through ROS scavenging, which might be helpful in elucidating salt tolerant mechanisms of heterotrimeric G protein in rice (PMID 30621186). The α -subunit of the rice heterotrimeric G protein, RGA1, regulates drought tolerance during the vegetative phase in the dwarf rice mutant d1 (PMID 27194741). The G α heterotrimeric G protein subunit, RGA1, plays an important role in regulating photoprotection and photoprotection of rice (PMID 29216416).

Recommended Dilutions

WB 1:500 - 1:2000**ELISA** Recommended starting concentration is 1 μ g/mL. Please optimize the concentration based on your specific assay requirements.

Immunogen Information

Gene ID

4338448

Swiss Prot

Q0DJ33

Immunogen

Recombinant protein (or fragment). This information is considered to be commercially sensitive.

Synonyms

D1; GA1; GPA1; RGA1; GP-alpha-1; OJ1005_D04.15

Contact

 | 400-999-6126 | cn.market@abclonal.com.cn | www.abclonal.com.cn

Product Information

Source

Rabbit

Isotype

IgG

Purification

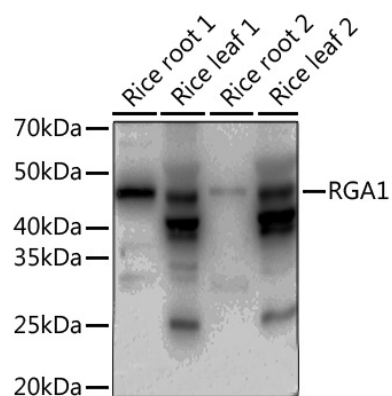
Affinity purification

Storage

Store at -20°C. Avoid freeze / thaw cycles.

Buffer: PBS containing 50% glycerol, preserved with proclin300 or sodium azide (as specified on the Certificate of Analysis), pH 7.3.

Validation Data



Western blot analysis of various lysates using RGA1 Rabbit pAb (A19214) at 1:1000 dilution.
Secondary antibody: HRP-conjugated Goat anti-Rabbit IgG (H+L) (AS014) at 1:8000 dilution.
Lysates/proteins: 25µg per lane.
Blocking buffer: 3% nonfat dry milk in TBST.
Detection: ECL Basic Kit (RM00020).
Exposure time: 30s.