

OsGSR1 Rabbit pAb

Catalog No.: A19205

Basic Information

Observed MW

15kDa

Calculated MW

11kDa

Category

Primary antibody

Applications

WB, ELISA

Cross-Reactivity

Oryza sativa

Background

OsGSR1, a member of the GAST (GA-stimulated transcript) gene family, is induced by Gibberellins (GA) and repressed by brassinosteroids (BR). OsGSR1 plays important roles in both BR and GA pathways, and also mediates an interaction between the two signaling pathways.

Recommended Dilutions

WB 1:500 - 1:2000

ELISA Recommended starting concentration is 1 µg/mL. Please optimize the concentration based on your specific assay requirements.

Immunogen Information

Gene ID

4340712

Swiss Prot

Q53AN3

Immunogen

Recombinant protein (or fragment). This information is considered to be commercially sensitive.

Synonyms

Gsr1; OJ1001_B06.38; OsGSR1

Contact

 | 400-999-6126

 | cn.market@abclonal.com.cn

 | www.abclonal.com.cn

Product Information

Source

Rabbit

Isotype

IgG

Purification

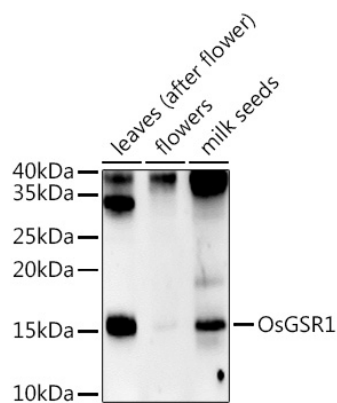
Affinity purification

Storage

Store at -20°C. Avoid freeze / thaw cycles.

Buffer: PBS with 0.01% thimerosal, 50% glycerol, pH 7.3.

Validation Data



Western blot analysis of extracts of various tissues from the japonica rice (*Oryza sativa* L.) variety Zhonghua 11, using OsGSR1 Rabbit pAb (A19205) at 1:1000 dilution.

Secondary antibody: HRP-conjugated Goat anti-Rabbit IgG (H+L) (AS014) at 1:10000 dilution.

Lysates/proteins: 25µg per lane.

Blocking buffer: 3% nonfat dry milk in TBST.

Detection: ECL Enhanced Kit (RM00021).

Exposure time: 600s.