

OsELF3 Rabbit pAb

Catalog No.: A19188

Basic Information

Observed MW

83kDa

Calculated MW

82kDa

Category

Primary antibody

Applications

WB, ELISA

Cross-Reactivity

Oryza sativa

Background

Involved in the regulation of flowering time under short day (SD) and long day (LD) conditions. Functions as floral promoter by negatively regulating GHD7, a repressor of the photoperiodic control of flowering. Acts as floral activator in the LD photoperiodic pathway. Involved in blue light-induced activation of EHD1 expression to promote flowering under SD conditions

Recommended Dilutions

WB 1:500 - 1:2000

ELISA Recommended starting concentration is 1 µg/mL. Please optimize the concentration based on your specific assay requirements.

Immunogen Information

Gene ID

4340087

Swiss Prot

Q9SNQ6

Immunogen

Recombinant protein (or fragment). This information is considered to be commercially sensitive.

Synonyms

Ef7; HD3B; Hd-q; Hd17; ELF3-1; OsELF3; OsELF3-1; OsJ_20086; OsELF3

Contact

☎ | 400-999-6126

✉ | cn.market@abclonal.com.cn

🌐 | www.abclonal.com.cn

Product Information

Source

Rabbit

Isotype

IgG

Purification

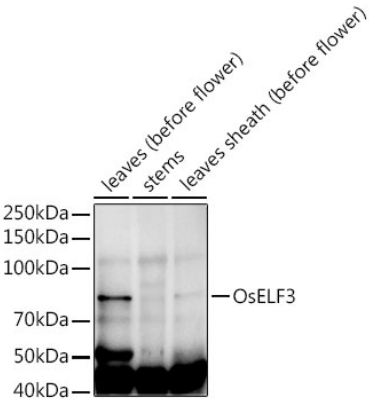
Affinity purification

Storage

Store at -20°C. Avoid freeze / thaw cycles.

Buffer: PBS with 0.02% sodium azide, 50% glycerol, pH7.3.

Validation Data



Western blot analysis of extracts of various tissues from the japonica rice (*Oryza sativa* L.) variety Zhonghua 11, using OsELF3 Rabbit pAb (A19188) at 1:1000 dilution.
Secondary antibody: HRP-conjugated Goat anti-Rabbit IgG (H+L) (AS014) at 1:10000 dilution.
Lysates/proteins: 25µg per lane.
Blocking buffer: 3% nonfat dry milk in TBST.
Detection: ECL Enhanced Kit (RM00021).
Exposure time: 120s.