

OsRACK1A Rabbit pAb

Catalog No.: A19140

Basic Information

Observed MW

36kDa

Calculated MW

36kDa

Category

Primary antibody

Applications

WB, ELISA

Cross-Reactivity

Oryza sativa

Background

Component of the RACK1 regulatory proteins that functions in innate immunity by interacting with multiple proteins in the RAC1 immune complex. Acts as positive regulator of reactive oxygen species (ROS) production and is required for resistance against rice blast (*M. grisea*) infection.

Recommended Dilutions

WB 1:500 - 1:2000

ELISA Recommended starting concentration is 1 µg/mL. Please optimize the concentration based on your specific assay requirements.

Immunogen Information

Gene ID

4324115

Swiss Prot

P49027

Immunogen

Recombinant protein (or fragment). This information is considered to be commercially sensitive.

Synonyms

RWD; GPB-LR; RACK1A; OsRACK1A

Contact

 | 400-999-6126

 | cn.market@abclonal.com.cn

 | www.abclonal.com.cn

Product Information

Source

Rabbit

Isotype

IgG

Purification

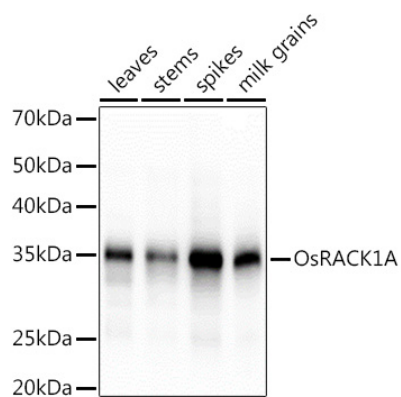
Affinity purification

Storage

Store at -20°C. Avoid freeze / thaw cycles.

Buffer: PBS with 0.02% sodium azide, 50% glycerol, pH 7.3.

Validation Data



Western blot analysis of extracts of various tissues from the japonica rice (*Oryza sativa* L.) variety Zhonghua 11, using OsRACK1A Rabbit pAb (A19140) at 1:1000 dilution.
Secondary antibody: HRP-conjugated Goat anti-Rabbit IgG (H+L) (AS014) at 1:10000 dilution.
Lysates/proteins: 25µg per lane.
Blocking buffer: 3% nonfat dry milk in TBST.
Detection: ECL Basic Kit (RM00020).
Exposure time: 10s.