

Synaptophysin Rabbit mAb

Catalog No.: A19122 **Recombinant** **10 Publications**

Basic Information

Observed MW

38 kDa

Calculated MW

34 kDa

Category

Primary antibody

Applications

WB, IF-F, IF-P, ELISA

Cross-Reactivity

Mouse, Rat

CloneNo number

ARC0427

Background

This gene encodes an integral membrane protein of small synaptic vesicles in brain and endocrine cells. The protein also binds cholesterol and is thought to direct targeting of vesicle-associated membrane protein 2 (synaptobrevin) to intracellular compartments. Mutations in this gene are associated with an X-linked form of cognitive disability.

Recommended Dilutions

WB 1:1000 - 1:2000

IF-F 1:200 - 1:800

IF-P 1:200 - 1:800

ELISA Recommended starting concentration is 1 µg/mL. Please optimize the concentration based on your specific assay requirements.

Immunogen Information

Gene ID

6855

Swiss Prot

P08247

Immunogen

Synthetic peptide. This information is considered to be commercially sensitive.

Synonyms

MRX96; MRXSYP; XLID96; Synaptophysin

Contact

☎ | 400-999-6126

✉ | cn.market@abclonal.com.cn

🌐 | www.abclonal.com.cn

Product Information

Source

Rabbit

Isotype

IgG

Purification

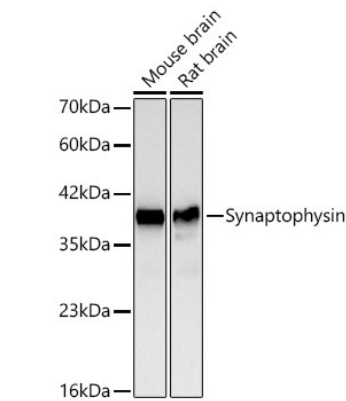
Affinity purification

Storage

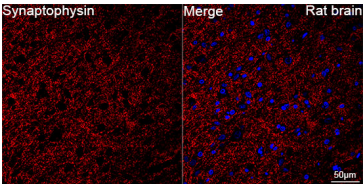
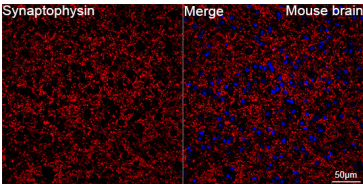
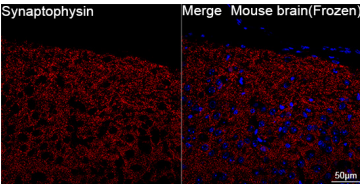
Store at -20°C. Avoid freeze / thaw cycles.

Buffer: PBS containing 50% glycerol and 0.05% BSA, preserved with proclin300 or sodium azide (as specified on the Certificate of Analysis), pH 7.3.

Validation Data



Western blot analysis of various lysates using Synaptophysin Rabbit mAb (A19122) at 1:1000 dilution. Secondary antibody: HRP-conjugated Goat anti-Rabbit IgG (H+L) (AS014) at 1:10000 dilution. Lysates/proteins: 25µg per lane. Blocking buffer: 3% nonfat dry milk in TBST. Detection: ECL Basic Kit (RM00020). Exposure time: 60s.



Confocal imaging of frozen sections Mouse brain tissue using Synaptophysin Rabbit mAb (A19122, dilution 1:200) followed by a further incubation with Cy3-conjugated Goat anti-Rabbit IgG (H+L) (AS007, dilution 1:500) (Red). DAPI was used for nuclear staining (Blue). Microwave antigen retrieval performed with 0.01M Citrate Buffer (pH 6.0) prior to IF staining. Objective: 40x.

Confocal imaging of paraffin-embedded Mouse brain using Synaptophysin Rabbit mAb (A19122, dilution 1:200) followed by a further incubation with Cy3 Goat Anti-Rabbit IgG (H+L) (AS007, dilution 1:500)(Red). DAPI was used for nuclear staining (Blue). Objective: 40x. Perform microwave antigen retrieval with 0.01 M citRate buffer (pH 6.0) prior to IF staining.

Confocal imaging of paraffin-embedded Rat brain using Synaptophysin Rabbit mAb (A19122, dilution 1:200) followed by a further incubation with Cy3 Goat Anti-Rabbit IgG (H+L) (AS007, dilution 1:500)(Red). DAPI was used for nuclear staining (Blue). Objective: 40x. Perform microwave antigen retrieval with 0.01 M citRate buffer (pH 6.0) prior to IF staining.