

[KO Validated] Smad3 Rabbit mAb

Catalog No.: A19115

KO Validated

Recombinant

44 Publications

Basic Information

Observed MW

52kDa

Calculated MW

48kDa

Category

Primary antibody

Applications

WB, IHC-P, IP, ChIP, ELISA

Cross-Reactivity

Human, Mouse, Rat

CloneNo number

ARC53861

Background

The SMAD family of proteins are a group of intracellular signal transducer proteins similar to the gene products of the Drosophila gene 'mothers against decapentaplegic' (Mad) and the C. elegans gene Sma. The SMAD3 protein functions in the transforming growth factor-beta signaling pathway, and transmits signals from the cell surface to the nucleus, regulating gene activity and cell proliferation. This protein forms a complex with other SMAD proteins and binds DNA, functioning both as a transcription factor and tumor suppressor. Mutations in this gene are associated with aneurysms-osteoarthritis syndrome and Loeys-Dietz Syndrome 3.

Recommended Dilutions

WB 1:10000 - 1:60000**IHC-P** 1:200 - 1:2000**IP** 0.5µg-4µg antibody for
200µg-400µg extracts of
whole cells**ChIP** 3µg antibody for
15µg-25µg of Chromatin**ELISA** Recommended starting
concentration is 1 µg/mL.
Please optimize the
concentration based on
your specific assay
requirements.

Contact

 | 400-999-6126 | cn.market@abclonal.com.cn

Immunogen Information

Gene ID

4088

Swiss Prot

P84022

Immunogen

Synthetic peptide. This information is considered to be commercially sensitive.

Synonyms

LDS3; mad3; LDS1C; MADH3; JV15-2; hMAD-3; hSMAD3; HSPC193; HsT17436; d3

Product Information

Source

Rabbit

Isotype

IgG

Purification

Affinity purification

Storage

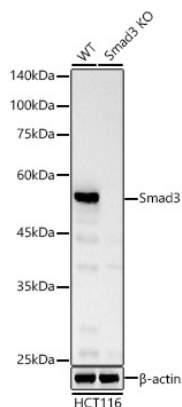
Store at -20°C. Avoid freeze / thaw cycles.

Buffer: PBS containing 50% glycerol and 0.05% BSA, preserved with proclin300 or sodium azide (as specified on the Certificate of Analysis), pH 7.3.



www.abclonal.com.cn

Validation Data



Western blot analysis of lysates from wild type(WT) and Smad3 Rabbit mAb knockout (KO) HCT116(KO) cells, using Smad3 Rabbit mAb (A19115) at 1:20000 dilution.

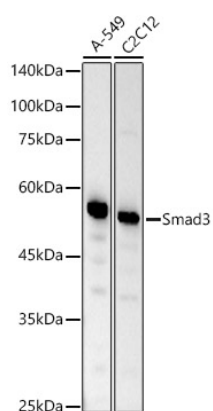
Secondary antibody: HRP-conjugated Goat anti-Rabbit IgG (H+L) (AS014) at 1:10000 dilution.

Lysates/proteins: 25 μ g per lane.

Blocking buffer: 3% nonfat dry milk in TBST.

Detection: ECL Basic Kit (RM00020).

Exposure time: 30s.



Western blot analysis of various lysates, using Smad3 Rabbit mAb (A19115) at 1:20000 dilution.

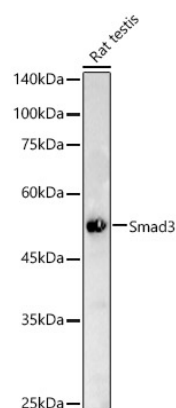
Secondary antibody: HRP-conjugated Goat anti-Rabbit IgG (H+L) (AS014) at 1:10000 dilution.

Lysates/proteins: 25 μ g per lane.

Blocking buffer: 3% nonfat dry milk in TBST.

Detection: ECL Basic Kit (RM00020).

Exposure time: 30s.



Western blot analysis of lysates from Rat testis, using Smad3 Rabbit mAb (A19115) at 1:20000 dilution.

Secondary antibody: HRP-conjugated Goat anti-Rabbit IgG (H+L) (AS014) at 1:10000 dilution.

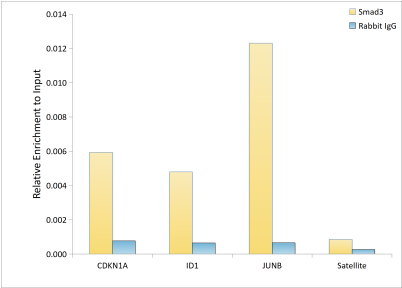
Lysates/proteins: 25 μ g per lane.

Blocking buffer: 3% nonfat dry milk in TBST.

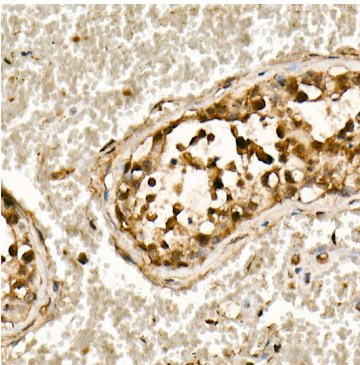
Detection: ECL Basic Kit (RM00020).

Exposure time: 30s.

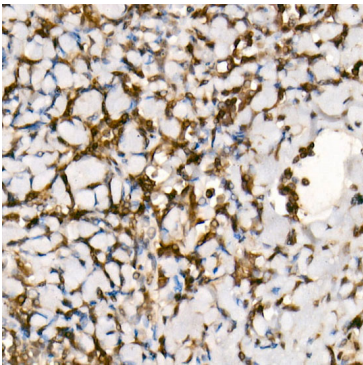
Validation Data



Chromatin immunoprecipitation was performed with 25 µg of cross-linked chromatin from HeLa, using 3 µg of [KO Validated] Smad3 Rabbit mAb (A19115) and Rabbit IgG isotype control (AC042). The enrichment of immunoprecipitated DNA at different genomic loci was examined by quantitative PCR. The histogram compares the ratio of the immunoprecipitated DNA to the input at given loci.



Immunohistochemistry analysis of paraffin-embedded Human testis using [KO Validated] Smad3 Rabbit mAb (A19115) at dilution of 1:200 (40x lens). High pressure antigen retrieval performed with 0.01M Citrate buffer (pH 6.0) prior to IHC staining.



Immunohistochemistry analysis of paraffin-embedded Human tonsil using [KO Validated] Smad3 Rabbit mAb (A19115) at dilution of 1:200 (40x lens). High pressure antigen retrieval performed with 0.01M Citrate buffer (pH 6.0) prior to IHC staining.