

# Integrin beta 3 (ITGB3/CD61) Rabbit mAb

Catalog No.: A19073

Recombinant

8 Publications

## Basic Information

### Observed MW

100kDa

### Calculated MW

87kDa

### Category

Primary antibody

### Applications

WB, IP, FC (intra), ELISA

### Cross-Reactivity

Human, Mouse, Rat

### CloneNo number

ARC0460

## Background

The ITGB3 protein product is the integrin beta chain beta 3. Integrins are integral cell-surface proteins composed of an alpha chain and a beta chain. A given chain may combine with multiple partners resulting in different integrins. Integrin beta 3 is found along with the alpha IIb chain in platelets. Integrins are known to participate in cell adhesion as well as cell-surface mediated signalling.

## Recommended Dilutions

**WB** 1:1000 - 1:2000

**IP** 0.5µg-4µg antibody for  
200µg-400µg extracts of  
whole cells

**FC (intra)** 1:50 - 1:200

**ELISA** Recommended starting  
concentration is 1 µg/mL.  
Please optimize the  
concentration based on  
your specific assay  
requirements.

## Contact

☎ | 400-999-6126

✉ | [cn.market@abclonal.com.cn](mailto:cn.market@abclonal.com.cn)

🌐 | [www.abclonal.com.cn](http://www.abclonal.com.cn)

## Immunogen Information

### Gene ID

3690

### Swiss Prot

P05106

### Immunogen

Synthetic peptide. This information is considered to be commercially sensitive.

### Synonyms

GT; GT2; CD61; GP3A; BDPLT2; GPIIIa; BDPLT16; BDPLT24; Integrin beta 3 (ITGB3/CD61)

## Product Information

### Source

Rabbit

### Isotype

IgG

### Purification

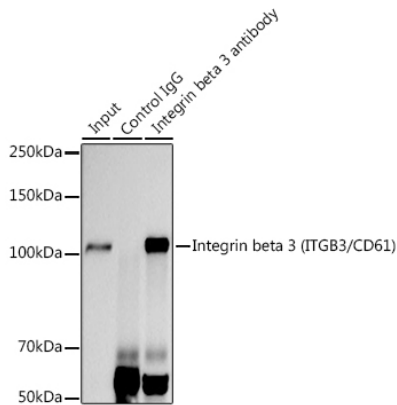
Affinity purification

### Storage

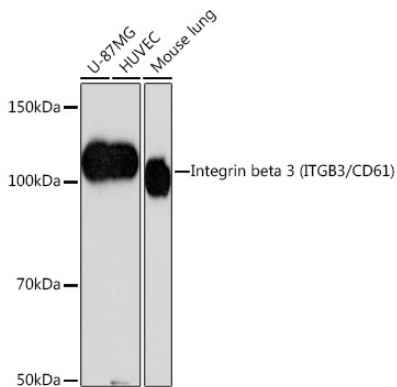
Store at -20°C. Avoid freeze / thaw cycles.

Buffer: PBS containing 50% glycerol and 0.05% BSA, preserved with proclin300 or sodium azide (as specified on the Certificate of Analysis), pH 7.3.

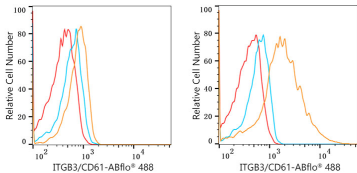
Validation Data



Immunoprecipitation analysis of 300 µg extracts of U-87MG cells using 3 µg Integrin beta 3 (ITGB3/CD61) antibody (A19073). Western blot was performed from the immunoprecipitate using Integrin beta 3 (ITGB3/CD61) antibody (A19073) at a dilution of 1:1000.



Western blot analysis of various lysates using Integrin beta 3 (ITGB3/CD61) Rabbit mAb (A19073) at 1:1000 dilution.  
Secondary antibody: HRP-conjugated Goat anti-Rabbit IgG (H+L) (AS014) at 1:10000 dilution.  
Lysates/proteins: 25µg per lane.  
Blocking buffer: 3% nonfat dry milk in TBST.  
Detection: ECL Basic Kit (RM00020).  
Exposure time: 90s.



Flow cytometry:1X10<sup>6</sup> U-937 cells (negative control,left) and HEL cells (right) were intracellularly-stained with Integrin beta 3 (ITGB3/CD61) Rabbit mAb(A19073, 2.5 µg/mL,orange line) or Rabbit IgG isotype control (AC042, 2.5 µg/mL,blue line),followed by FITC conjugated goat anti-rabbit pAb(1:200 dilution) staining. Non-fluorescently stained cells were used as blank control (red line).