

ELK1 Rabbit mAb

Catalog No.: A19046

Recombinant

2 Publications

Basic Information

Observed MW

62kDa

Calculated MW

45kDa

Category

Primary antibody

Applications

WB,IP,ELISA

Cross-Reactivity

Human, Mouse, Rat

CloneNo number

ARC0339

Background

This gene is a member of the Ets family of transcription factors and of the ternary complex factor (TCF) subfamily. Proteins of the TCF subfamily form a ternary complex by binding to the the serum response factor and the serum response element in the promoter of the c-fos proto-oncogene. The protein encoded by this gene is a nuclear target for the ras-raf-MAPK signaling cascade. This gene produces multiple isoforms by using alternative translational start codons and by alternative splicing. Related pseudogenes have been identified on chromosomes 7 and 14.

Recommended Dilutions

WB 1:1000 - 1:2000

IP 0.5µg-4µg antibody for
200µg-400µg extracts of
whole cells

ELISA Recommended starting
concentration is 1 µg/mL.
Please optimize the
concentration based on
your specific assay
requirements.

Contact

☎ | 400-999-6126

✉ | cn.market@abclonal.com.cn

🌐 | www.abclonal.com.cn

Immunogen Information

Gene ID

2002

Swiss Prot

P19419

Immunogen

Synthetic peptide. This information is considered to be commercially sensitive.

Synonyms

ELK1

Product Information

Source

Rabbit

Isotype

IgG

Purification

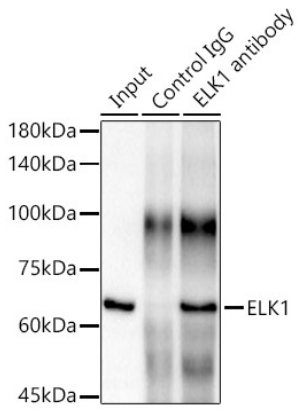
Affinity purification

Storage

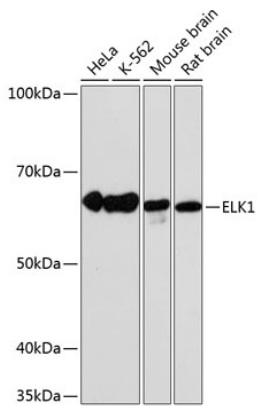
Store at -20°C. Avoid freeze / thaw cycles.

Buffer: PBS containing 50% glycerol and 0.05% BSA, preserved with proclin300 or sodium azide (as specified on the Certificate of Analysis), pH 7.3.

Validation Data



Immunoprecipitation analysis of 300 µg extracts of HeLa cells using 3 µg ELK1 antibody (A19046). Western blot was performed from the immunoprecipitate using ELK1 antibody (A19046) at a dilution of 1:1000.



Western blot analysis of various lysates using ELK1 Rabbit mAb (A19046) at 1:1000 dilution. Secondary antibody: HRP-conjugated Goat anti-Rabbit IgG (H+L) (AS014) at 1:10000 dilution. Lysates/proteins: 25µg per lane. Blocking buffer: 3% nonfat dry milk in TBST. Detection: ECL Basic Kit (RM00020). Exposure time: 1min.