

# Cullin 1 Rabbit mAb

Catalog No.: A19034 **Recombinant** **1 Publications**

## Basic Information

### Observed MW

90 kDa

### Calculated MW

90kDa

### Category

Primary antibody

### Applications

WB,ELISA

### Cross-Reactivity

Human, Mouse, Rat

### CloneNo number

ARC0436

## Background

Predicted to enable ubiquitin protein ligase binding activity and ubiquitin-protein transferase activity. Involved in SCF-dependent proteasomal ubiquitin-dependent protein catabolic process and protein ubiquitination. Located in plasma membrane. Part of Parkin-FBXW7-Cul1 ubiquitin ligase complex and SCF ubiquitin ligase complex.

## Recommended Dilutions

**WB** 1:1000 - 1:3000

**ELISA** Recommended starting concentration is 1 µg/mL. Please optimize the concentration based on your specific assay requirements.

## Immunogen Information

### Gene ID

8454

### Swiss Prot

Q13616

### Immunogen

Synthetic peptide. This information is considered to be commercially sensitive.

### Synonyms

Cullin 1; CUL1; cullin-1; MGC149834; MGC149835

## Contact

☎ | 400-999-6126

✉ | [cn.market@abclonal.com.cn](mailto:cn.market@abclonal.com.cn)

🌐 | [www.abclonal.com.cn](http://www.abclonal.com.cn)

## Product Information

### Source

Rabbit

### Isotype

IgG

### Purification

Affinity purification

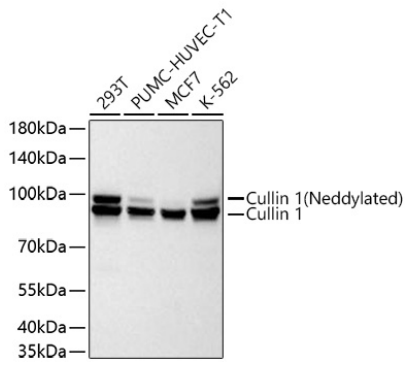
### Storage

Store at -20°C. Avoid freeze / thaw cycles.

Buffer: PBS containing 50% glycerol and 0.05% BSA, preserved with proclin300 or sodium azide (as specified on the Certificate of Analysis), pH 7.3.

## Validation Data

---



Western blot analysis of various lysates using Cullin 1 Rabbit mAb (A19034) at 1:1000 dilution incubated at room temperature for 1.5 hours.

Secondary antibody: HRP-conjugated Goat anti-Rabbit IgG (H+L) (AS014) at 1:10000 dilution.

Lysates/proteins: 25 µg per lane.

Blocking buffer: 3% nonfat dry milk in TBST.

Detection: ECL Basic Kit (RM00020).

Exposure time: 20 s.