

[KD Validated] CDX2 Rabbit mAb

Catalog No.: A19030 **Recombinant** **2 Publications**

Basic Information

Observed MW

38kDa

Calculated MW

34kDa

Category

Primary antibody

Applications

WB,IHC-P,IF/ICC,IP,ELISA

Cross-Reactivity

Human, Mouse, Rat

CloneNo number

ARC0450

Background

This gene is a member of the caudal-related homeobox transcription factor gene family. The encoded protein is a major regulator of intestine-specific genes involved in cell growth and differentiation. This protein also plays a role in early embryonic development of the intestinal tract. Aberrant expression of this gene is associated with intestinal inflammation and tumorigenesis.

Recommended Dilutions

WB 1:1000 - 1:2000

IHC-P 1:1000 - 1:4000

IF/ICC 1:100 - 1:1000

IP 0.5µg-4µg antibody for
200µg-400µg extracts of
whole cells

ELISA Recommended starting
concentration is 1 µg/mL.
Please optimize the
concentration based on
your specific assay
requirements.

Immunogen Information

Gene ID

1045

Swiss Prot

Q99626

Immunogen

Synthetic peptide. This information is considered to be commercially sensitive.

Synonyms

CDX3; CDX-3; CDX2/AS; X2

Product Information

Source

Rabbit

Isotype

IgG

Purification

Affinity purification

Storage

Store at -20°C. Avoid freeze / thaw cycles.

Buffer: PBS with 0.02% sodium azide,0.05% BSA,50% glycerol,pH7.3.

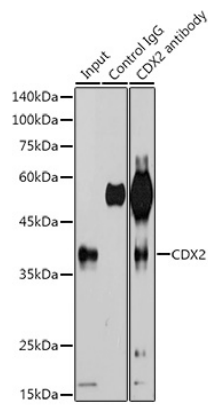
Contact

☎ | 400-999-6126

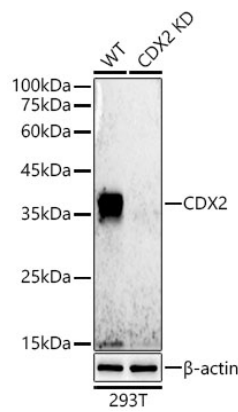
✉ | cn.market@abclonal.com.cn

🌐 | www.abclonal.com.cn

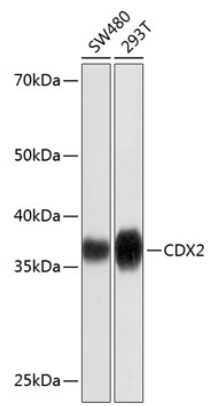
Validation Data



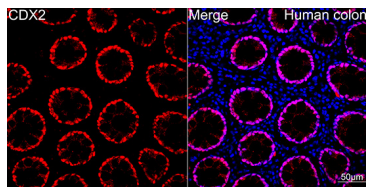
Immunoprecipitation analysis of 600 µg extracts of 293T cells using 3 µg [KD Validated] CDX2 Rabbit mAb (A19030). Western blot was performed from the immunoprecipitate using CDX2 antibody (A19030) at a dilution of 1:500.



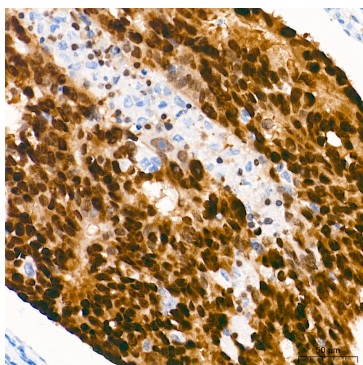
Western blot analysis of lysates from wild type(WT) and CDX2 knockdown (KD) 293T cells, using [KD Validated] CDX2 Rabbit mAb (A19030) at 1:500 dilution.
Secondary antibody: HRP-conjugated Goat anti-Rabbit IgG (H+L) (AS014) at 1:10000 dilution.
Lysates/proteins: 25µg per lane.
Blocking buffer: 3% nonfat dry milk in TBST.
Detection: ECL Basic Kit (RM00020).
Exposure time: 30s.



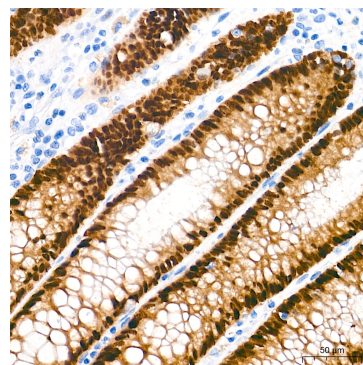
Western blot analysis of various lysates using [KD Validated] CDX2 Rabbit mAb (A19030) at 1:1000 dilution.
Secondary antibody: HRP-conjugated Goat anti-Rabbit IgG (H+L) (AS014) at 1:10000 dilution.
Lysates/proteins: 25µg per lane.
Blocking buffer: 3% nonfat dry milk in TBST.
Detection: ECL Basic Kit (RM00020).
Exposure time: 3min.



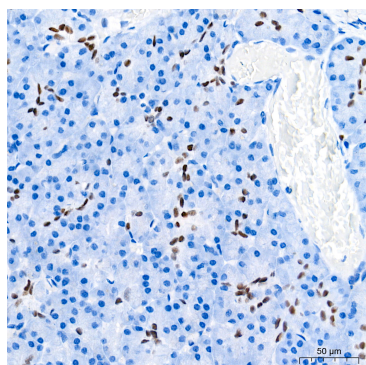
Confocal imaging of Human colon using [KD Validated] CDX2 Rabbit mAb (A19030, dilution 1:100) (Red). DAPI was used for nuclear staining (blue). Objective: 40x.



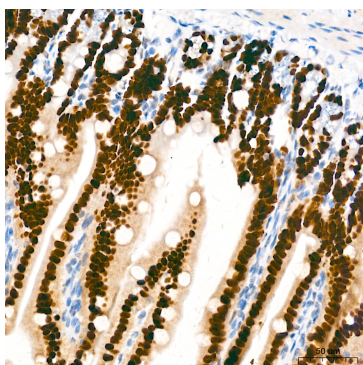
Immunohistochemistry analysis of paraffin-embedded Human colon carcinoma tissue using [KD Validated] CDX2 Rabbit mAb (A19030) at a dilution of 1:2000 (40x lens). High pressure antigen retrieval performed with 0.01M Tris-EDTA Buffer (pH 9.0) prior to IHC staining.



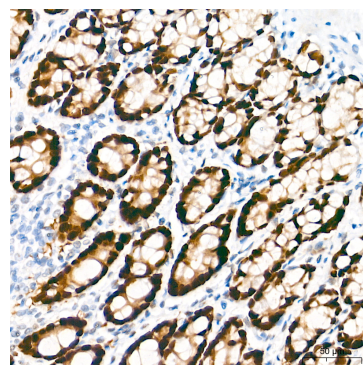
Immunohistochemistry analysis of paraffin-embedded Human colon tissue using [KD Validated] CDX2 Rabbit mAb (A19030) at a dilution of 1:2000 (40x lens). High pressure antigen retrieval performed with 0.01M Tris-EDTA Buffer (pH 9.0) prior to IHC staining.



Immunohistochemistry analysis of paraffin-embedded Human pancreas tissue using [KD Validated] CDX2 Rabbit mAb (A19030) at a dilution of 1:2000 (40x lens). High pressure antigen retrieval performed with 0.01M Tris-EDTA Buffer (pH 9.0) prior to IHC staining.



Immunohistochemistry analysis of paraffin-embedded Mouse intestine tissue using [KD Validated] CDX2 Rabbit mAb (A19030) at a dilution of 1:2000 (40x lens). High pressure antigen retrieval performed with 0.01M Tris-EDTA Buffer (pH 9.0) prior to IHC staining.



Immunohistochemistry analysis of paraffin-embedded Rat colon tissue using [KD Validated] CDX2 Rabbit mAb (A19030) at a dilution of 1:2000 (40x lens). High pressure antigen retrieval performed with 0.01M Tris-EDTA Buffer (pH 9.0) prior to IHC staining.