

CD34 Rabbit mAb

Catalog No.: A19015

Recombinant

10 Publications

Basic Information

Observed MW

80-120 kDa

Calculated MW

41 kDa

Category

Primary antibody

Applications

WB, IHC-P, mIHC, ELISA

Cross-Reactivity

Human, Mouse, Rat

CloneNo number

ARC0219

Background

The protein encoded by this gene may play a role in the attachment of stem cells to the bone marrow extracellular matrix or to stromal cells. This single-pass membrane protein is highly glycosylated and phosphorylated by protein kinase C. Two transcript variants encoding different isoforms have been found for this gene.

Recommended Dilutions

WB 1:1000 - 1:2000

IHC-P 1:100 - 1:400

mIHC 1:100 - 1:400

ELISA Recommended starting concentration is 1 µg/mL. Please optimize the concentration based on your specific assay requirements.

Immunogen Information

Gene ID

947

Swiss Prot

P28906

Immunogen

Synthetic peptide. This information is considered to be commercially sensitive.

Synonyms

CD34; CD34 molecule; GIG3; MORT1

Contact

☎ | 400-999-6126

✉ | cn.market@abclonal.com.cn

🌐 | www.abclonal.com.cn

Product Information

Source

Rabbit

Isotype

IgG

Purification

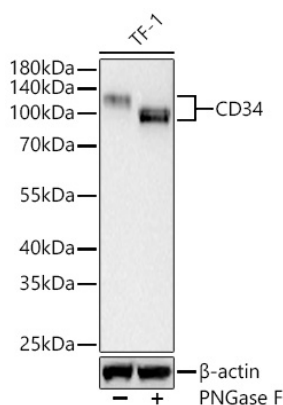
Affinity purification

Storage

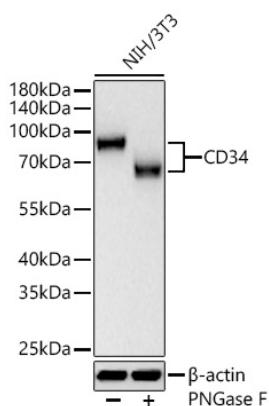
Store at -20°C. Avoid freeze / thaw cycles.

Buffer: PBS with 0.02% sodium azide, 0.05% BSA, 50% glycerol, pH7.3.

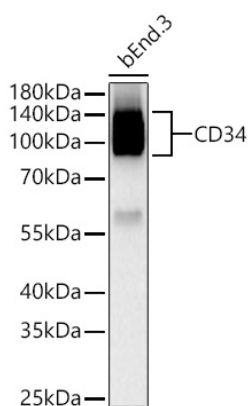
Validation Data



Western blot analysis of lysates from TF-1 cells using CD34 Rabbit mAb (A19015) at 1:1000 dilution incubated overnight at 4°C. TF-1 cells were treated with PNGase F (6 U/μL) at 37°C for 1.5 hours. Secondary antibody: HRP-conjugated Goat anti-Rabbit IgG (H+L) (AS014) at 1:10000 dilution. Lysates/proteins: 25 μg per lane. Blocking buffer: 3% nonfat dry milk in TBST. Detection: ECL Basic Kit (RM00020). Exposure time: 90 s.

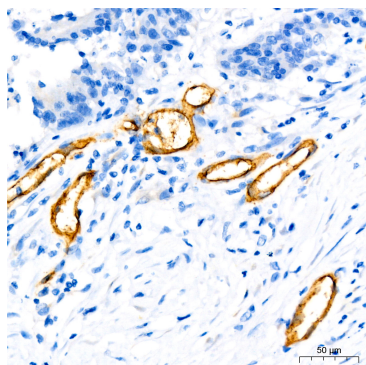


Western blot analysis of lysates from NIH/3T3 cells using CD34 Rabbit mAb (A19015) at 1:1000 dilution incubated overnight at 4°C. NIH/3T3 cells were treated with PNGase F (6 U/μL) at 37°C for 1.5 hours. Secondary antibody: HRP-conjugated Goat anti-Rabbit IgG (H+L) (AS014) at 1:10000 dilution. Lysates/proteins: 25 μg per lane. Blocking buffer: 3% nonfat dry milk in TBST. Detection: ECL Basic Kit (RM00020). Exposure time: 90 s.

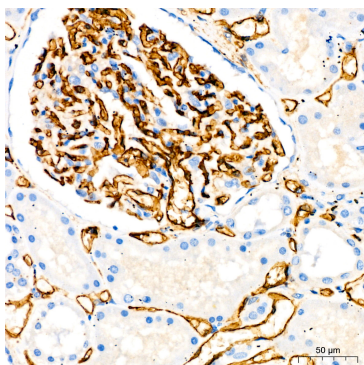


Western blot analysis of lysates from bEnd.3 cells using CD34 Rabbit mAb (A19015) at 1:1000 dilution incubated overnight at 4°C. Secondary antibody: HRP-conjugated Goat anti-Rabbit IgG (H+L) (AS014) at 1:10000 dilution. Lysates/proteins: 25 μg per lane. Blocking buffer: 3% nonfat dry milk in TBST. Detection: ECL Basic Kit (RM00020). Exposure time: 90 s.

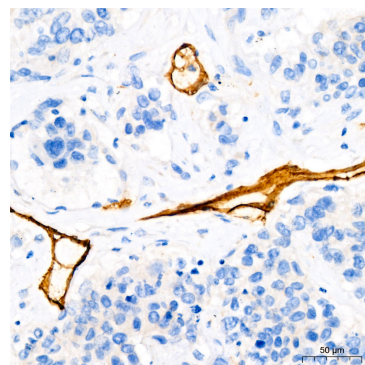
Validation Data



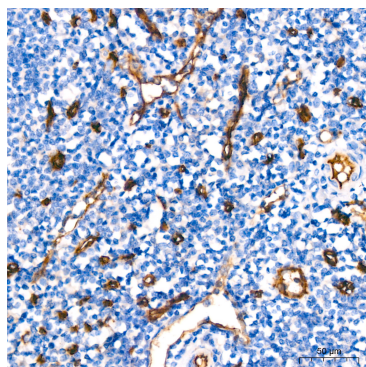
Immunohistochemistry analysis of paraffin-embedded Human colon carcinoma using CD34 Rabbit mAb (A19015) at dilution of 1:100 (40x lens). Microwave antigen retrieval performed with 0.01M Tris/EDTA Buffer (pH 9.0) prior to IHC staining.



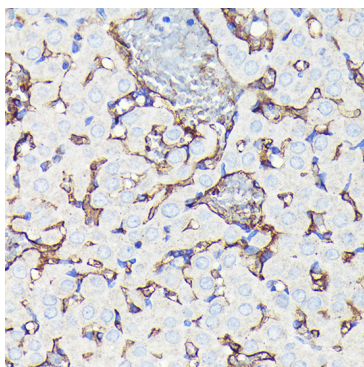
Immunohistochemistry analysis of paraffin-embedded Human kidney using CD34 Rabbit mAb (A19015) at dilution of 1:100 (40x lens). Microwave antigen retrieval performed with 0.01M Tris/EDTA Buffer (pH 9.0) prior to IHC staining.



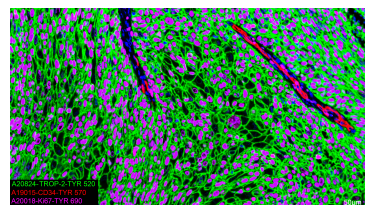
Immunohistochemistry analysis of paraffin-embedded Human lung cancer using CD34 Rabbit mAb (A19015) at dilution of 1:100 (40x lens). Microwave antigen retrieval performed with 0.01M Tris/EDTA Buffer (pH 9.0) prior to IHC staining.



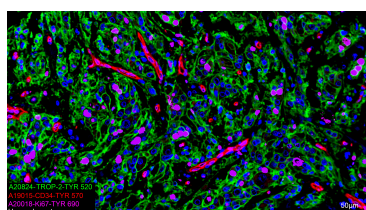
Immunohistochemistry analysis of paraffin-embedded Human tonsil using CD34 Rabbit mAb (A19015) at dilution of 1:100 (40x lens). Microwave antigen retrieval performed with 0.01M Tris/EDTA Buffer (pH 9.0) prior to IHC staining.



Immunohistochemistry analysis of paraffin-embedded Rat ovary tissue using CD34 Rabbit mAb (A19015) at a dilution of 1:100 (40x lens). High pressure antigen retrieval performed with 0.01M Tris-EDTA Buffer (pH 9.0) prior to IHC staining.



The multiplex IHC analysis on paraffin-embedded Human cervical cancer tissue using the following specific primary antibodies and tyramide signal amplification (TSA) reagents (RK05903) : TROP-2 Rabbit mAb (A20824, 1:8000) with TSA-TYR-520 (Green), CD34 Rabbit mAb (A19015, 1:100) with TSA-TYR-570 (Red), and Ki67 Rabbit mAb (A20018, 1:500) with TSA-TYR-690 (Magenta). DAPI (Blue) was used for nuclear staining. Prior to multiplex IHC staining, high-pressure antigen retrieval was performed using 0.01M citrate buffer at pH 6.0. The analysis was completed using a 20x objective lens.



The multiplex IHC analysis on paraffin-embedded Human breast cancer tissue using the following specific primary antibodies and

Validation Data

tyramide signal amplification (TSA) reagents (RK05903) : TROP-2 Rabbit mAb (A20824, 1:8000) with TSA-TYR-520 (Green), CD34 Rabbit mAb (A19015, 1:100) with TSA-TYR-570 (Red), and Ki67 Rabbit mAb (A20018, 1:500) with TSA-TYR-690 (Magenta). DAPI (Blue) was used for nuclear staining. Prior to multiplex IHC staining, high-pressure antigen retrieval was performed using 0.01M citrate buffer at pH 6.0. The analysis was completed using a 20x objective lens.