

SHH Rabbit pAb

Catalog No.: A18863 **2 Publications**

Basic Information

Observed MW

45kDa

Calculated MW

48kDa

Category

Primary antibody

Applications

WB, ELISA

Cross-Reactivity

Human, Mouse, Rat

Background

Enables glycosaminoglycan binding activity; laminin-1 binding activity; and patched binding activity. Involved in several processes, including hematopoietic or lymphoid organ development; positive regulation of T cell activation; and regulation of smooth muscle cell differentiation. Acts upstream of or within several processes, including animal organ development; limb morphogenesis; and neurogenesis. Located in several cellular components, including cell surface; extracellular space; and membrane raft. Is expressed in several structures, including alimentary system; central nervous system; genitourinary system; limb bud; and sensory organ. Used to study brachydactyly type A1 and holoprosencephaly 3. Human ortholog(s) of this gene implicated in several diseases, including Hirschsprung's disease; holoprosencephaly (multiple); hypoplastic or aplastic tibia with polydactyly; middle cerebral artery infarction; and polydactyly. Orthologous to human SHH (sonic hedgehog signaling molecule).

Recommended Dilutions

WB 1:500 - 1:1000**ELISA** Recommended starting concentration is 1 µg/mL. Please optimize the concentration based on your specific assay requirements.

Immunogen Information

Gene ID

20423

Swiss Prot

Q62226

Immunogen

Recombinant protein (or fragment). This information is considered to be commercially sensitive.

Synonyms

Hx; Dsh; Hhg1; Hxl3; ShhNC; M100081; 9530036011Rik; SHH

Contact

 | 400-999-6126 | cn.market@abclonal.com.cn | www.abclonal.com.cn

Product Information

Source

Rabbit

Isotype

IgG

Purification

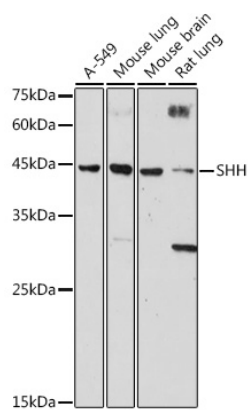
Affinity purification

Storage

Store at -20°C. Avoid freeze / thaw cycles.

Buffer: PBS containing 50% glycerol, preserved with proclin300 or sodium azide (as specified on the Certificate of Analysis), pH 7.3.

Validation Data



Western blot analysis of various lysates using SHH Rabbit pAb (A18863) at 1:1000 dilution.
Secondary antibody: HRP-conjugated Goat anti-Rabbit IgG (H+L) (AS014) at 1:10000 dilution.
Lysates/proteins: 25µg per lane.
Blocking buffer: 3% nonfat dry milk in TBST.
Detection: ECL Basic Kit (RM00020).
Exposure time: 30s.