

# [KD Validated] CTCF Rabbit pAb

Catalog No.: A18627 **1 Publications**

## Basic Information

### Observed MW

140kDa

### Calculated MW

83kDa

### Category

Primary antibody

### Applications

WB,IHC-P,IP,ELISA,ChIP

### Cross-Reactivity

Human, Mouse, Rat

## Background

This gene is a member of the BORIS + CTCF gene family and encodes a transcriptional regulator protein with 11 highly conserved zinc finger (ZF) domains. This nuclear protein is able to use different combinations of the ZF domains to bind different DNA target sequences and proteins. Depending upon the context of the site, the protein can bind a histone acetyltransferase (HAT)-containing complex and function as a transcriptional activator or bind a histone deacetylase (HDAC)-containing complex and function as a transcriptional repressor. If the protein is bound to a transcriptional insulator element, it can block communication between enhancers and upstream promoters, thereby regulating imprinted expression. Mutations in this gene have been associated with invasive breast cancers, prostate cancers, and Wilms' tumors. Alternatively spliced transcript variants encoding different isoforms have been found for this gene.

## Recommended Dilutions

**WB** 1:500 - 1:2000

**IHC-P** 1:50 - 1:200

**IP** 0.5µg-4µg antibody for  
200µg-400µg extracts of  
whole cells

**ELISA** Recommended starting  
concentration is 1 µg/mL.  
Please optimize the  
concentration based on  
your specific assay  
requirements.

**ChIP** 5µg antibody for  
10µg-15µg of Chromatin

## Contact

☎ | 400-999-6126

✉ | [cn.market@abclonal.com.cn](mailto:cn.market@abclonal.com.cn)

## Immunogen Information

### Gene ID

10664

### Swiss Prot

P49711

### Immunogen

Recombinant protein (or fragment). This information is considered to be commercially sensitive.

### Synonyms

MRD21; FAP108; CFAP108; CF

## Product Information

### Source

Rabbit

### Isotype

IgG

### Purification

Affinity purification

### Storage

Store at -20°C. Avoid freeze / thaw cycles.

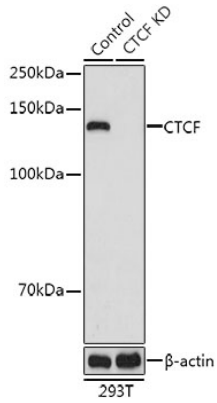
Buffer: PBS with 0.01% thimerosal, 50% glycerol, pH7.3.



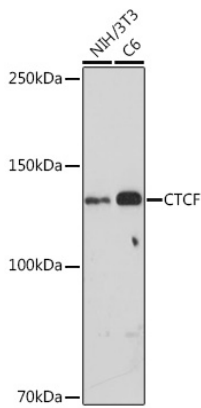
| [www.abclonal.com.cn](http://www.abclonal.com.cn)

---

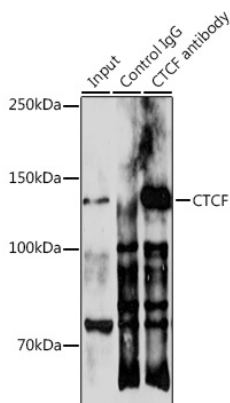
## Validation Data



Western blot analysis of lysates from wild type (WT) and CTCF knockdown (KD) 293T cells, using [KD Validated] CTCF Rabbit pAb (A18627) at 1:1000 dilution.  
Secondary antibody: HRP-conjugated Goat anti-Rabbit IgG (H+L) (AS014) at 1:10000 dilution.  
Lysates/proteins: 25 $\mu$ g per lane.  
Blocking buffer: 3% nonfat dry milk in TBST.  
Detection: ECL Basic Kit (RM00020).  
Exposure time: 10s.



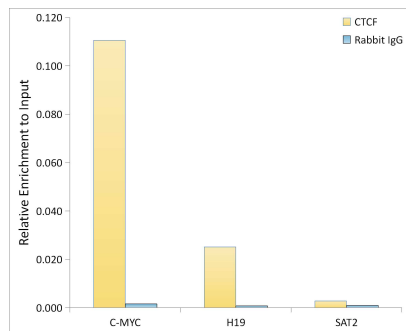
Western blot analysis of various lysates using [KD Validated] CTCF Rabbit pAb (A18627) at 1:500 dilution.  
Secondary antibody: HRP-conjugated Goat anti-Rabbit IgG (H+L) (AS014) at 1:10000 dilution.  
Lysates/proteins: 25 $\mu$ g per lane.  
Blocking buffer: 3% nonfat dry milk in TBST.  
Detection: ECL Basic Kit (RM00020).  
Exposure time: 30s.



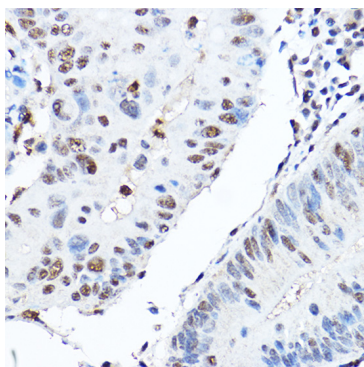
Immunoprecipitation analysis of 300  $\mu$ g extracts of 293T cells using 3  $\mu$ g [KD Validated] CTCF Rabbit pAb (A18627). Western blot was performed from the immunoprecipitate using CTCF antibody (A18627) at a dilution of 1:500.

## Validation Data

---



Chromatin immunoprecipitation analysis of extracts of HeLa cells, using [KD Validated] CTCF Rabbit pAb (A18627) and rabbit IgG. The amount of immunoprecipitated DNA was checked by quantitative PCR. Histogram was constructed by the ratios of the immunoprecipitated DNA to the input.



Immunohistochemistry analysis of paraffin-embedded Human colon carcinoma using [KD Validated] CTCF Rabbit pAb (A18627) at dilution of 1:200 (40x lens). High pressure antigen retrieval performed with 0.01M Citrate buffer (pH 6.0) prior to IHC staining.