

Amphiregulin Rabbit pAb

Catalog No.: A1860 **7 Publications**

Basic Information

Observed MW

43 kDa

Calculated MW

28 kDa

Category

Primary antibody

Applications

WB, ELISA

Cross-Reactivity

Human, Mouse

Background

The protein encoded by this gene is a member of the epidermal growth factor family. It is an autocrine growth factor as well as a mitogen for astrocytes, Schwann cells and fibroblasts. It is related to epidermal growth factor (EGF) and transforming growth factor alpha (TGF-alpha). The protein interacts with the EGF/TGF-alpha receptor to promote the growth of normal epithelial cells, and it inhibits the growth of certain aggressive carcinoma cell lines. It also functions in mammary gland, oocyte and bone tissue development. This gene is associated with a psoriasis-like skin phenotype, and is also associated with other pathological disorders, including various types of cancers and inflammatory conditions.

Recommended Dilutions

WB 1:500 - 1:5000

ELISA Recommended starting concentration is 1 µg/mL. Please optimize the concentration based on your specific assay requirements.

Immunogen Information

Gene ID

374

Swiss Prot

P15514

Immunogen

Recombinant protein (or fragment). This information is considered to be commercially sensitive.

Synonyms

AR; SDGF; AREGB; CRDGF; Amphiregulin

Contact

☎ | 400-999-6126

✉ | cn.market@abclonal.com.cn

🌐 | www.abclonal.com.cn

Product Information

Source

Rabbit

Isotype

IgG

Purification

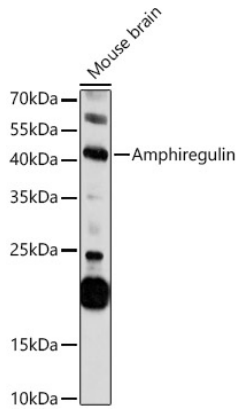
Affinity purification

Storage

Store at -20°C. Avoid freeze / thaw cycles.

Buffer: PBS, pH 7.3, containing 50% glycerol. Preserved with Proclin300 or sodium azide. May contain 0.05% BSA as specified on the Certificate of Analysis.

Validation Data



Western blot analysis of lysates from Mouse brain, using Amphiregulin Rabbit pAb (A1860) at 1:1000 dilution.

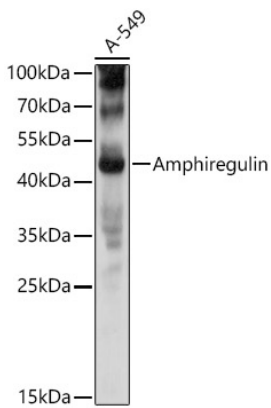
Secondary antibody: HRP-conjugated Goat anti-Rabbit IgG (H+L) (AS014) at 1:10000 dilution.

Lysates/proteins: 25µg per lane.

Blocking buffer: 3% nonfat dry milk in TBST.

Detection: ECL Basic Kit (RM00020).

Exposure time: 300s.



Western blot analysis of lysates from A-549 cells, using Amphiregulin Rabbit pAb (A1860) at 1:1000 dilution.

Secondary antibody: HRP-conjugated Goat anti-Rabbit IgG (H+L) (AS014) at 1:10000 dilution.

Lysates/proteins: 25µg per lane.

Blocking buffer: 3% nonfat dry milk in TBST.

Detection: ECL Basic Kit (RM00020).

Exposure time: 3s.