

MT-CO3 Rabbit pAb

Catalog No.: A18318 **1 Publications**

Basic Information

Observed MW

Refer to figures

Calculated MW

30kDa

Category

Primary antibody

Applications

ELISA, WB, IHC-P, IF/ICC

Cross-Reactivity

Human, Mouse, Rat

Background

Predicted to enable electron transfer activity and oxidoreduction-driven active transmembrane transporter activity. Involved in respiratory chain complex IV assembly. Part of respiratory chain complex IV. Implicated in MELAS syndrome.

Recommended Dilutions

WB	1:500 - 1:2000
IHC-P	1:50 - 1:200
IF/ICC	1:50 - 1:200

Immunogen Information

Gene ID

4514

Swiss Prot

P00414

Immunogen

A synthetic peptide corresponding to a sequence within amino acids 101-200 of human MT-CO3 (YP_003024032.1).

Synonyms

COIII; MTCO3; COX3; MT-CO3

Contact

☎	400-999-6126
✉	cn.market@abclonal.com.cn
🌐	www.abclonal.com.cn

Product Information

Source

Rabbit

Isotype

IgG

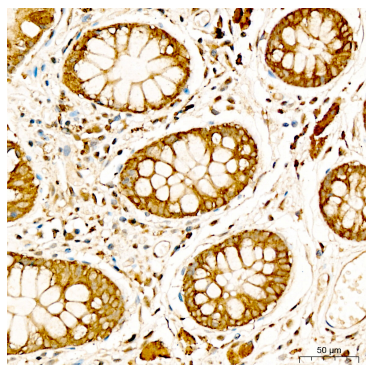
Purification

Affinity purification

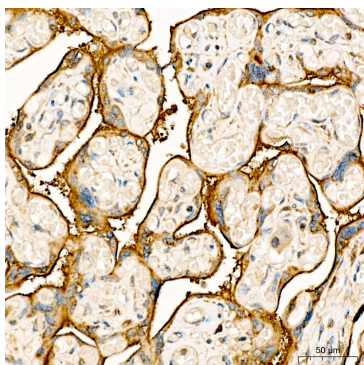
Storage

Store at -20°C. Avoid freeze / thaw cycles.

Buffer: PBS with 0.01% thimerosal, 50% glycerol, pH7.3.



Immunohistochemistry analysis of MT-CO3 in paraffin-embedded human colon using MT-CO3 Rabbit pAb (A18318) at dilution of 1:100 (40x lens). Perform high pressure antigen retrieval with 10 mM citrate buffer pH 6.0 before commencing with IHC staining protocol.



Immunohistochemistry analysis of MT-CO3 in paraffin-embedded human placenta using MT-CO3 Rabbit pAb (A18318) at dilution of 1:100 (40x lens). Perform high pressure antigen retrieval with 10 mM citrate buffer pH 6.0 before commencing with IHC staining protocol.