

# [KO Validated] UBE2S Rabbit pAb

Catalog No.: A18064 **KO** **Validated** **2 Publications**

## Basic Information

### Observed MW

26kDa

### Calculated MW

24kDa

### Category

Primary antibody

### Applications

ELISA, WB

### Cross-Reactivity

Human, Mouse, Rat

## Background

This gene encodes a member of the ubiquitin-conjugating enzyme family. The encoded protein is able to form a thiol ester linkage with ubiquitin in a ubiquitin activating enzyme-dependent manner, a characteristic property of ubiquitin carrier proteins.

## Recommended Dilutions

**WB** 1:200 - 1:2000

## Immunogen Information

### Gene ID

27338

### Swiss Prot

Q16763

### Immunogen

Recombinant fusion protein containing a sequence corresponding to amino acids 122-221 of human UBE2S (NP\_055316.2).

### Synonyms

EPF5; E2EPF; E2-EPF; 2S

## Contact

 | 400-999-6126

 | [cn.market@abclonal.com.cn](mailto:cn.market@abclonal.com.cn)

 | [www.abclonal.com.cn](http://www.abclonal.com.cn)

## Product Information

### Source

Rabbit

### Isotype

IgG

### Purification

Affinity purification

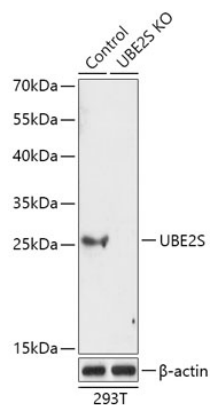
### Storage

Store at -20°C. Avoid freeze / thaw cycles.

Buffer: PBS with 0.01% thimerosal, 50% glycerol, pH7.3.

## Validation Data

---



Western blot analysis of lysates from wild type (WT) and UBE2S knockout (KO) 293T cells, using [KO Validated] UBE2S Rabbit pAb (A18064) at 1:1000 dilution.

Secondary antibody: HRP Goat Anti-Rabbit IgG (H+L) (AS014) at 1:10000 dilution.

Lysates/proteins: 25 $\mu$ g per lane.

Blocking buffer: 3% nonfat dry milk in TBST.

Detection: ECL Basic Kit (RM00020).

Exposure time: 5s.